



PARATECH

®

Made in the USA and Used Worldwide.

Timeline



1962 WORLD'S FAMOUS PRY AXE INTRODUCED

1965 THE HOOLIGAN TOOL, THE WORLD'S FIRST PRODUCTION "HALLIGAN" TYPE FORCIBLE TOOL IS INTRODUCED

1976 MAXIFORCE® AIR LIFTING BAGS INTRODUCED TO THE UNITED STATES FIRE RESCUE SERVICE

1979 PARATECH BECOMES THE FIRST U.S. MANUFACTURER OF A MOLDED, HIGH PRESSURE AIR LIFTING BAG

1981 THE P-10 TRUCK MADE BY PARATECH FOR THE U.S.A. AIR FORCE STATIONED IN SOUTH KOREA

1983 PARATECH INTRODUCES THE WORLD'S FIRST KEVLAR® REINFORCED AIR LIFTING BAGS UNDER ITS MAXIFORCE® TRADEMARK

1984 PARATECH INTRODUCES THE AIRGUN 40 PNEUMATIC IMPACT TOOL

1985 U.S. NAVY PURCHASES 500 AIRGUN 40S FOR SHIPBOARD FIREFIGHTING

1992 RESCUE STRUTS, THE FIRST SELF-LOCKING COLLAPSE SUPPORT SYSTEMS IN THE WORLD ARE INTRODUCED

1993 FIRST VEHICLE STABILIZATION (VSK) KIT CREATED

1994 NORTHRIDGE, CA EARTHQUAKE: LOS ANGELES CITY & COUNTY RESCUE TEAMS USE MAXIFORCE® LIFTING BAGS, RESCUE STRUTS, PRT KITS AND PRY-AXES FOR RESCUE

1995 KOBE, JAPAN EARTHQUAKE: MAXIFORCE® LIFTING BAGS, RESCUE STRUTS, PRT KITS AND PRY-AXES USED FOR RESCUE

1998 PARATECH ACHIEVES ISO 9001 CERTIFICATION

1999 ISTANBUL, TURKEY EARTHQUAKE: RESCUE STRUTS & MAXIFORCE® LIFTING BAGS BECOME A VITAL PART OF EARTHQUAKE PREPAREDNESS

2000 LONGSHORE STRUTS DESIGNED & DEVELOPED FOR HIGH ANGLE COLLAPSE RESCUE

2002 THE BUSTER TOOL IS DESIGNED TO MEET AND EXCEED FAA REGULATIONS FOR CRASH AXES

2002 PARATECH EU IS ESTABLISHED IN DENMARK IN ORDER TO CREATE A STRONGER PRESENCE IN EUROPE

2003 PARATECH RESCUE SUPPORT SYSTEMS ARE ADAPTED BY FEMA AS A STANDARD



2004 UNITED KINGDOM STANDARDIZES ON PARATECH RESCUE STRUTS FOR THEIR COLLAPSE AND US&R OPERATIONS

2005 THE SHORING HAMMER IS INTRODUCED AND USED THROUGHOUT NEW ORLEANS IN THE WAKE OF HURRICANE KATRINA

2006 THE SMT™ (SPECIAL MISSION TENDER) IS INTRODUCED FOR QUICK AND EASY DEPLOYMENT AND PURCHASE OF PARATECH EQUIPMENT

2007 THE WALER SYSTEM IS DEVELOPED

2007 SINGAPORE CIVIL DEFENSE RESPONDS TO CHINA EARTHQUAKE WITH PARATECH EQUIPMENT

2008 THE MULTI BASE IS DESIGNED FOR RESCUE SUPPORT SYSTEMS

2009 PARATECH EQUIPMENT DEPLOYED TO L'AQUILA, ITALY EARTHQUAKE

2010 PARATECH EQUIPMENT DEPLOYED TO HAITI EARTHQUAKE

2010 THE STRONGEST 'ALL IN ONE' VEHICLE STABILIZER, THE TVS, (TWISTLOCK VEHICLE STABILIZER) IS INTRODUCED

2012 ABSOLUTE RAKER—FIRST ALL MECHANICAL RAKER SHORE INTRODUCED

2013 HYDRAULIC-FUSION-STRUT (HFS PARATECH'S FIRST HYDRAULIC RESCUE STRUT UNVEILED

2014 DAMAGE CONTROL SYSTEMS (DCS) PARATECH DCS INSTALLED ON SWEDISH NAVY SHIPS

2014 PARATECH INTRODUCES MAXIFORCE® G2 AIR LIFTING BAGS

2014 THE TITAN CRASH AXE IS CREATED BY PARATECH, WITH INPUT FROM THE AIR FORCE'S PARARESCUEMEN

2015 THE MULTIFORCE® AIR LIFTING BAG IS INTRODUCED

2016 THE VSK CONTROLLER IS INTRODUCED

2016 MULTIFORCE POSITIONING LIGHTS ARE INTRODUCED

2017 THE ACMETHREAD STRUT DRIVER RETRO FIT KIT IS INTRODUCED

2018 PARATECH INTRODUCES THE ACMETHREAD STRUT DRIVER

2019 THE G3 DEADMAN CONTROLLERS AND VENTED COUPLINGS ARE INTRODUCED

2020 G3 PRESET REGULATOR INTRODUCED

2022 RESCUE GUARDIAN IS INTRODUCED

PARATECH

For more than 50 years, Paratech has been combining innovative design with cutting edge technology to provide the highest quality and most user-friendly tools available for rescue and beyond. From the world's most advanced collapse support solutions to some of the world's strongest forcible entry tools, Paratech makes technical rescue operations simpler, safer and more productive.

Our product lines are comprised of Rescue Support Systems, MAXIFORCE[®] Air Lifting Bags, The MULTIFORCE[®] Air Lifting Bag, Powered Impact Tools, Forcible Entry Tools, Rescue Air Cushions, and the ultimate collection of essential Paratech products...the SMT[™]...

Special Mission Tender equipped specifically for either urban search and rescue or trench rescue, both are loaded with all of the necessary Paratech tools needed for technical rescue.

Paratech products are extensively used by fire departments worldwide including, but not limited to: all major U.S. cities, Copenhagen, Tokyo, London, Lyon, Madrid, Singapore and Istanbul. In addition, they have been selected by disaster agencies in the United States, Denmark, Japan, United Kingdom and Turkey as the standard for their rescue teams and technical rescue caches.



The Paratech Rescue Support System

The Paratech Rescue Support System is truly a “go anywhere” system. Designed to be effective for the simplest to the most demanding deployment, there isn’t a more comprehensive, scalable and straightforward system than Paratech’s. Whether you choose the precision of the AcmeThread Strut, the automatic locking collar of the LockStroke Strut or the added length of the LongShore Strut, they are strong and versatile enough for nearly every collapse and stabilization scenario.

The entire system includes 5 sizes of AcmeThread Struts, 4 sizes of LockStroke Struts, 3 sizes of HydraFusion Struts, 4 sizes of AcmeThread/LockStroke Extensions, 5 sizes of LongShore Struts, 4 LongShore Extensions and over 20 interchangeable base plates designed to support a wide variety of contact points. All aluminum alloy components of the Rescue Support System are hard coat anodized to reduce electrical conductivity and increase strength and durability.

Truly a system that will not stop growing, Paratech’s Rescue Support System can be used in excavation collapse (trenches, mines), vehicle stabilization, structural collapse and reinforcement, or wherever there is a need for quick, strong and safe vertical or horizontal shoring.

Structural Shoring

Earthquakes, construction collapse, cave-ins, floods and structural fire damage require a collapse rescue system designed for the purpose of extracting victims in a safe and timely manner.

Vehicle Stabilization

Paratech Vehicle Stabilization Kits have the strength and flexibility to handle any size vehicle anytime, anywhere. This includes sub compact cars, buses, cement trucks and even locomotives. Additionally, these components provide the extra value of being completely interchangeable with your other Paratech equipment for building collapse and trench rescue scenarios.



Trench

Trench Shoring

Paratech’s pneumatic Rescue Struts allow for remote placement and easy locking as well as safe, remote removal. Used in combination with our Waler System, trench rescue has never been faster, easier or safer.

Special Applications

To be used in combination with Paratech’s LongShore, AcmeThread and LockStroke Struts, a wide variety of bases and accessories are available to assist in numerous special application scenarios. These include, but in no way are limited to: elevator shaft access and victim retrieval, high angle applications, confined space work and trench rescue. Add-on kits include: Tripod, Bipod, Monopod and Elevator Support Unit Kits.



Building Collapse

Train Stabilization



Introducing **RESCUE GUARDIAN**

Part No. 22-796RG1

The most advanced monitoring and alarm system for technical rescue available. Remotely monitor multiple Rescue Guardians at once on either Android or iPhone operating systems. Receive notifications of any change in status. Designed by rescue professionals for rescue professionals. The ultimate in rescue monitoring technology.

Monitors:
Load, Vibration, Incline

Wirelessly Transmits:
Load change, Seismic activity, Incline data

Warning System:
6 high powered red LEDs
High decibel auditory alarm
Notifications via Bluetooth

Applications:
Structural Collapse (Raker Shoring, Vertical Shoring), Vehicle Stabilization, Trench Rescue, Stand-alone monitoring

Easy to Use
and Very Customizable

Advanced Technology
for all types of rescues

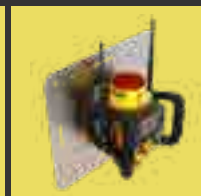
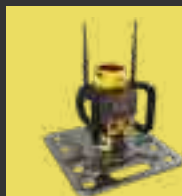


Remote Monitoring App
Very secure and very flexible. Use loaded presets for standard applications or adjust them to custom, savable settings based on your requirements. This software is designed to be intuitive and easy to learn. Future ready for upgrades and updates.



1 Week Battery Life
under continuous usage in low-power monitoring mode. Includes a low battery warning. Easily replaceable and available lithium ion batteries.

Use in-line with RescueStruts
Numerous Mounting Configurations Available!



Rescue Support Systems

RSS Comparison	AcmeThread	LockStroke	LongShore	HydraFusion
SIZES	5	4	5	3
LENGTHS	12 – 88 in (31–224 cm)	19 – 89 in (48–226 cm)	26–198 in (66–503 cm)	8.2–51.1 (46.2–121.2 cm)
EXTENSIONS	4	4	4	AcmeThread & LongShore
EXTENSION LENGTHS	6–36 in (15–91 cm)	6–36 in (15–91 cm)	12–67 in (30.5–170 cm)	6–67 in (15–170 cm)
AUTO LOCKING COLLAR	NO	YES	NO	NO
FINE ADJUSTMENT	YES	YES with attachment	YES	YES
REMOTE PLACEMENT	YES	YES	YES	YES
TRENCH STABILIZATION	YES	YES	YES	YES
COLLAPSE STABILIZATION	YES	YES	YES	YES
VEHICLE STABILIZATION	YES	YES	YES	YES

AcmeThread Strut

The Paratech AcmeThread Struts are comprised of a 2½" diameter Acme threaded aluminum movable solid shaft that extends out of a 3" diameter aluminum tube. The AcmeThread is a square thread that allows full surface contact of the shaft through the collar and the collar full surface contact on the tube to transfer load directly to ground. AcmeThread Struts can be extended manually or pneumatically with air, carbon dioxide or nitrogen.

Place strut into position, 'EXTEND' threaded shaft into desired length, 'SPIN' collar to 'LOCK' the strut.

It is as easy as...

EXTEND & SPIN TO LOCK

Adjustments to the threaded shaft can be made in ANY increment up to the maximum length of the strut.

LockStroke Strut

The Paratech LockStroke Struts are comprised of a 2½" diameter grooved solid aluminum movable shaft that extends out of a 3" diameter aluminum tube. LockStroke Struts have a ball bearing filled collar that locks automatically when the shaft extends either manually or pneumatically with air, carbon dioxide or nitrogen.

'SET' strut into position, 'EXTEND' strut with air or manually and the strut 'LOCKS' automatically. It is as easy as...

SET, EXTEND TO LOCK



Over 20 Interchangeable Bases

All Aluminum Alloy Components Of The Rescue Support System Are Hard Coat Anodized To Increase Strength And Durability
Machine Knurled Non-Slip Locking Collar
Acmethread-Longshore-Hydrfusion



The Strongest & Most Versatile Struts In The World

Paratech AcmeThread & LockStroke Load Table

Working Load Chart At The Following Safety Factors

LENGTH	2:1		3:1		4:1	
	lb.	kg.	lb.	kg.	lb.	kg.
2 ft (0.6m)	43,500	19,731	29,000	13,154	21,750	9,866
4 ft (1.2m)	40,000	18,144	26,667	12,096	20,000	9,072
6 ft (1.8m)	28,250	12,814	18,830	8,541	14,125	6,407
8 ft (2.4m)	24,050	10,909	16,030	7,271	12,025	5,455
10 ft (3.0m)	10,725	4,865	7,150	3,243	5,360	2,431
12 ft (3.6m)	7,660	3,475	5,000	2,313	3,830	1,737

5 YEAR WARRANTY

The data in this table has been confirmed by physical testing, witnessed and certified by an independent, licensed structural engineering company.

LongShore Strut

The Paratech LongShore Struts are comprised of a 3" diameter threaded aluminum movable shaft that extends out of a 3 1/2" diameter aluminum tube. The square thread allows full surface contact of the shaft through the collar and the collar full surface contact on the tube to transfer load directly to ground. LongShore Struts can be extended manually or pneumatically with air, carbon dioxide or nitrogen.

Place strut into position, 'EXTEND' threaded shaft into desired length, 'SPIN' collar to 'LOCK' the strut.

It is as easy as...

EXTEND & SPIN TO LOCK

Adjustments to the threaded shaft can be made in ANY increment up to the maximum length of the strut.



HydraFusion Strut

The Paratech HydraFusion Struts (AcmeThread) are comprised of a 3" diameter threaded aluminum shaft that extends hydraulically out of a 3 1/2" diameter aluminum tube. The hydraulic lift capacity is 10 U.S. tons with a 2:1 safety factor. Once the strut is extended, the AcmeThread collar is spun down to the locked position and creates a 20,000 lbs. 4:1 safety factor for stabilization.

Place strut into position, 'EXTEND' threaded shaft into desired length, 'SPIN' collar to 'LOCK' the strut.

It is as easy as...

EXTEND & SPIN TO LOCK

Adjustments to the threaded shaft can be made in ANY increment up to the maximum length of the strut.



Longshore Struts Are Stronger and Longer for Your Heaviest and Highest Support Situations

Paratech LongShore Load Table

Working Load Chart At The Following Safety Factors

LENGTH	2:1 lb.	kg.	3:1 lb.	kg.	4:1 lb.	kg.
6 ft (1.8m)	44,000	19,958	29,333	13,305	22,000	9,980
7 ft (2.1m)	44,000	19,958	29,333	13,305	22,000	9,980
8 ft (2.4m)	40,000	18,144	26,666	12,095	20,000	9,072
9 ft (2.7m)	32,000	14,515	21,333	9,676	16,000	7,257
10 ft (3.0m)	24,000	10,886	16,000	7,257	12,000	5,443
11 ft (3.3m)	22,000	9,979	14,667	6,653	11,000	4,990
12 ft (3.6m)	20,000	9,072	13,333	6,047	10,000	4,536
13 ft (3.9m)	14,000	6,350	9,332	4,233	7,000	3,175
14 ft (4.2m)	12,000	5,443	8,000	3,629	6,000	2,722
15 ft (4.5m)	9,000	4,082	6,000	2,722	4,500	2,041
16 ft (4.8m)	6,000	2,722	4,000	1,814	3,000	1,361

5 YEAR WARRANTY

The data in this table has been confirmed by physical testing, witnessed and certified by an independent, licensed structural engineering company.



Rescue Support Systems

HydraFusion Struts

The Paratech HydraFusion Struts offer end users the ability to lift up to 10 U.S. tons with a safety factor of 2:1 and to stabilize up to 20,000 lbs. with a safety factor of 4:1. The innovative, built in Dual Shaft End Adapter (patent pending) allows users to safely use Paratech LongShore, LockStroke or AcmeThread Struts and Extensions in conjunction with the incredible lifting ability of the HydraFusion Strut.



HydraFusion Strut Kits

All lift 10 tons (9.0 t) with a 2:1 safety factor.
All shore 20,000 lbs. (9.0 t) with a 4:1 safety factor

HydraFusion Strut 04 Kit
Net Weight: 42.2 lb 19.2 kg
Part No. 22-79HA04K

HydraFusion Strut 10 Kit
Net Weight: 51.8 lb 23.5 kg
Part No. 22-79HA10K

HydraFusion Strut 16 Kit
Net Weight: 60.7 lb 27.6 kg
Part No. 22-79HA16K

HydraFusion Pump With Gauge

With Gauge and Hose Only
Net Weight: 23.2 lb 10.5 kg
Part No. 22-790020G

No-spill, flat-face hydraulic coupling with a non-conductive 10 ft (3 m) kink-resistant hose. Two speed, single acting, lightweight, 10,000 psi (690 bar), metal hydraulic pump.



HydraFusion Hose Extension

Net Weight: 2.2 lb 1.0 kg Net
Part No. 22-790030X



HydraFusion Struts Accessories

Strut Converter
Use a Strut Converter to attach a base to the top end of a HydraFusion Strut
Net Weight: 2.7lb 1.2kg
Part No. 22-796035

HydraFusion Longshore Screw Adapter
Net Weight: 6.1lb 2.7kg
Part No. 22-790019

HydraFusion AcmeThread Screw Adapter
Net Weight: 6.5lb 2.9kg
Part No. 22-790067

Part No.	Description	Lift Height		Net Weight		Ship Weight	
		in	cm	lb	kg	lb	kg
22-79HA04	HydraFusion Strut 04	18.2 – 22.0 in	46.2 – 55.8 cm	18.7	8.5	19.7	8.9
22-79HA10	HydraFusion Strut 10	25.2 – 35.0 in	64.0 – 88.9 cm	28.3	12.8	29.3	13.3
22-79HA16	HydraFusion Strut 16	32.0 – 47.7 in	81.3 – 121.2 cm	37.2	16.9	38.2	17.3
22-79HA04K	HydraFusion Strut 04 Kit	4	10.2	42.2	19.2	43.4	19.6
22-79HA10K	HydraFusion Strut 10 Kit	10	25.4	51.8	23.5	52.8	23.9
22-79HA16K	HydraFusion Strut 16 Kit	15.9	40.4	60.7	27.6	61.7	27.9
22-790020G	HydraFusion Pump with Gauge	N/A	N/A	23.2	10.5	24.5	11.1
22-790019	HydraFusion LongShore Screw Adapter	N/A	N/A	6.1	2.7	7.5	3.4
22-790067	HydraFusion AcmeThread Screw Adapter	N/A	N/A	6.5	2.9	8.1	3.6
22-796035	Strut Converter	N/A	N/A	2.7	1.2	3.1	1.4

ACMETHREAD STRUTDRIVER LIFT LIKE NO OTHER!

**PARATECH ACMETHREAD STRUT
DRIVER EASY TO USE, QUICK TO
DEPLOY, STRONG AND SAFE**



AcmeThread Strut Driver

Medium duty strut lifting device integrated into our extremely strong and versatile AcmeThread Rescue Strut. Safe, Easy, Fast Lifting. 6,000 lbs (2,721 kg) lifting capacity. Limitless Functionality; Vehicle stabilization, Structural collapse scenarios, trench shoring, soft placement ability. Made from aircraft grade aluminum housings, alloy steel gears and hardened ball bearings, making lifting smooth and easy. Contoured gear box designed to resist dragging during vehicle lifts. Directional safety mechanism to insure strut will only travel in the direction it indicates.

Available in Two AcmeThread Strut Sizes

AcmeThread Strut Driver: 25-36 in / 64-91 cm (22.6 lbs / 10.2 kg)
Part No. 22-796200SD

AcmeThread Strut Driver: 37-58 in / 94-147 cm (29.6 lbs / 13.4 kg)
Part No. 22-796202SD

Hex Ratchet Handle: 22-797727 2.85 lbs / 1.3 kg

AcmeThread Strut Driver Retro Fit Kit

Can be attached to any of your existing AcmeThread struts to utilize all the same functionalities of the AcmeThread Strut Driver. This kit includes a removable gearbox and tube end adapter. Can be fully installed and still manually adjusted. An additional tube end adapter is necessary if using strut extensions. Accessories to this kit include the 3/4" (19mm) Hex Wrench and strut Carrying Handle.

Kit with Hex Ratchet Handle: 22-79SDRFH

17.2 lbs / 7.8 kg

Kit without Hex Ratchet Handle: 22-79SDRF

14.4 lbs / 6.5 kg

Hex Ratchet Handle: 22-797727

2.8 lbs / 1.3 kg

Carrying Handle: 22-797042E

2.4 lbs / 1.1 kg



Rescue Support Systems

AcmeThread Struts

AcmeThread Struts offer the end-user the ability to extend manually or pneumatically with air, carbon dioxide or nitrogen, utilizing the recessed nipple fitted to the aluminum tube. The 12-15 inch strut is the ONLY non-pneumatic strut. AcmeThread Struts always default to the locked position.



Part No.	Description	Net Weight: lb	kg	Ship Weight: lb	kg
22-796212	AcmeThread Strut 12-15 in / 30-38 cm	6.6	3.0	7.1	3.2
22-796206	AcmeThread Strut 19-25 in / 48-64 cm	11.2	5.1	11.7	5.3
22-796200	AcmeThread Strut 25-36 in / 64-91 cm	14.9	6.8	15.4	6.9
22-796202	AcmeThread Strut 37-58 in / 94-147 cm	22.4	10.2	22.9	10.4
22-796204	AcmeThread Strut 56-88 in / 142-224 cm	32.6	14.8	33.1	15.0

LockStroke Struts

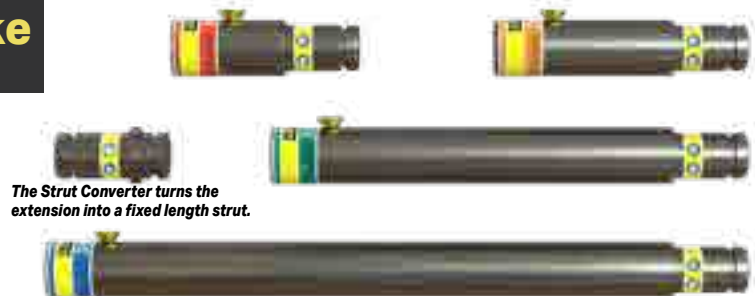
LockStroke Struts feature an innovative automatic locking collar. Activated either manually or pneumatically with air, carbon dioxide or nitrogen, LockStroke Struts always default to the locked position.



Part No.	Description	Net Weight: lb	kg	Ship Weight: lb	kg
22-796006	LockStroke Strut 19-25 in / 48-64 cm	12.7	5.8	13.2	5.9
22-796000	LockStroke Strut 25-36 in / 64-91 cm	16.5	7.5	17.0	7.7
22-796002	LockStroke Strut 36-58 in / 94-147 cm	24.0	10.9	24.5	11.1
22-796004	LockStroke Strut 55-88 in / 142-224 cm	35.7	16.2	36.2	16.4

AcmeThread & LockStroke Strut Extensions

Paratech offers four sizes of extensions 6, 12, 24 and 36 inches, which can be used with the AcmeThread & LockStroke Struts. Extensions are attached to the strut on the solid end.



The Strut Converter turns the extension into a fixed length strut.

Part No.	Description	Net Weight: lb	kg	Ship Weight: lb	kg
22-796035	Strut Converter	2.7	1.2	3.1	1.4
22-796017	Strut Extension 6 in / 15 cm	3.8	1.7	4.2	1.9
22-796012	Strut Extension 12 in / 30 cm	4.6	2.1	5.0	2.3
22-796024	Strut Extension 24 in / 61 cm	7.1	3.2	8.0	3.6
22-796036	Strut Extension 36 in / 91 cm	9.7	4.4	11.0	5.0

For all lengths displayed above. CLOSED position: inches rounded up - decimals not shown. OPEN position: inches rounded down - decimals not shown.

LongShore Struts

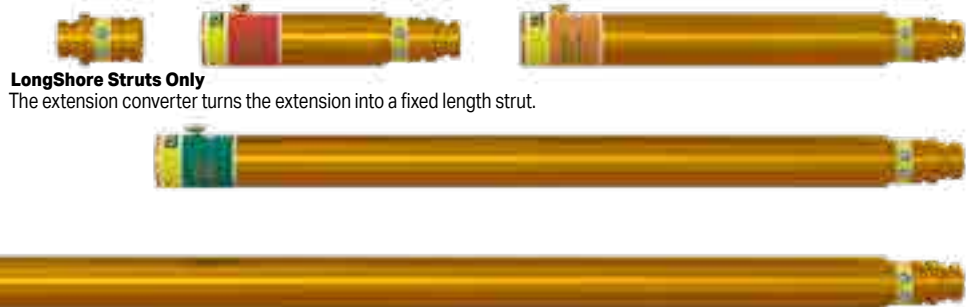
LongShore Struts offer end-users the ability to extend manually or pneumatically with air, carbon dioxide or nitrogen, utilizing the recessed nipple fitted to the aluminum tube. LongShore Struts always default to the locked position.



Part No.	Description	Net Weight: lb	kg	Ship Weight: lb	kg
22-796710	LongShore Strut 203 26-36 in / 66-91 cm	16.0	7.3	17.0	7.7
22-796720	LongShore Strut 304 36-50 in / 91-127 cm	22.0	10.0	23.0	10.5
22-796730	LongShore Strut 406 48-73 in / 122-185 cm	28.0	12.7	29.0	13.2
22-796360	LongShore Strut 610 72-116 in / 183-295 cm	41.0	18.6	42.0	19.1
22-796390	LongShore Strut 1016 114-198 in / 290-503 cm	65.0	29.5	66.0	29.9

LongShore Struts Extensions

Paratech offers four sizes of LongShore Extensions 12, 24, 48 and 67 inches. Extensions are attached to the strut on the solid end.



Part No.	Description	Net Weight: lb	kg	Ship Weight: lb	kg
22-796037	LongShore Converter	2.5	1.1	2.6	1.2
22-796341	LongShore Extension 135 12 in / 30 cm	6.2	2.8	7.2	3.3
22-796342	LongShore Extension 235 24 in / 61 cm	9.2	4.2	10.2	4.6
22-796356	LongShore Extension 435 48 in / 122 cm	15.0	6.8	16.0	7.3
22-796376	LongShore Extension 635 67 in / 170 cm	20.0	9.1	21.0	9.5

LongShore Adjustable Brace

The B23 and B57 are manually adjusted by twisting the inner threaded shaft to increase or decrease the length of the brace. Utilized in Paratech's Flying Raker Kit (B23) and Midpoint Brace Kit (B57). Utilized to support in both compression as well as tension applied forces.



Part No.	Description	Net Weight: lb	kg	Ship Weight: lb	kg
22-796348	LongShore Adjustable Brace B23 26-36 in / 66-91 cm	15.0	6.8	16.0	7.3
22-796350	LongShore Adjustable Brace B57 60-85 in / 152-216 cm	32.7	14.5	33.7	15.3

For all lengths displayed above. CLOSED position: inches rounded up - decimals not shown. OPEN position: inches rounded down - decimals not shown.





Rescue Support Systems



Bases & End Plates

Designed to be the strut's contact point, Paratech's wide assortment of aluminum alloy bases and end Plates offer unparalleled versatility in the widest range of collapse support situations.

For Use With:

-  AcmeThread
-  LockStroke
-  LongShore
-  HydraFusion



**ADJUSTABLE
THREADED
CONNECTOR**
For LockStroke Strut
Net Weight: 2.2lb 1.0kg
Part No. 22-796160



**SPRING
LOADED
CONNECTOR**
For LockStroke Strut
Net Weight: 2.2lb
1.0kg
Part No. 22-796170



V BASE
The V Base has a 90° V that will fit onto any right angle. Features 2 nailing holes should it need to be nailed to a piece of wood used in other applications
Net Weight: 1.4lb
0.6kg
Part No. 22-796090



**HINGED BASE
PLATE 12 with
ANCHOR RING**
12 IN / 30.5 CM
45° hinged base with eight
1 in / 2.5 cm picket holes
Net Weight: 12.0lb 5.4kg
Part No. 22-796180C



SWIVEL BASE 12
12 IN / 30.5 CM
20° swivel base with eight
1 in / 2.5 cm picket holes
Net Weight: 9.3lb 4.2kg
Part No. 22-796180B



RIGID BASE 12
12 IN / 30.5 CM
Net Weight: 8.6lb 3.9kg
Part No. 22-796180A



DUAL BASE
24 IN / 61 CM
Two 360 degree rotatable, quick locking
hinged bases with anchor rings.
Net Weight: 25.8lb 11.7kg
Part No. 22-796180D



**HINGED BASE WITH
ANCHOR RING**
6 IN / 15.2 CM
45° hinged base
Net Weight: 4.5lb 2.0kg
Part No. 22-796150



SWIVEL BASE 6
6 IN / 15.2 CM
20° swivel base
Net Weight: 3.3lb
1.5kg
Part No. 22-796060



RIGID BASE 6
6 IN / 15.2 CM
Net Weight: 2.8lb
1.3kg
Part No. 22-796070



CHANNEL BASE US:
6 IN x 6 IN / 15.2 CM x 15.2 CM
Part No. 22-796136

CHANNEL BASE METRIC:
6.3 IN x 7 IN / 16 CM x 17.8 CM
Part No. 22-796133

Used for structural collapse to support beams
Net Weight: 2.5lb 1.1kg



CHANNEL BASE US:
4 IN x 6 IN / 10.2 CM x 10.2 CM
Part No. 22-796134

CHANNEL BASE METRIC:
4.3 IN x 6 IN / 10.9 CM x 15.2 CM
Part No. 22-796131

Used for structural collapse to support beams
Net Weight: 2.0lb 0.9kg

Rescue Support Systems



MULTI CHAIN BASE

Takes 3/8" (9.5mm) and 1/2" (12.7mm)
*Including square chains

Net Weight: 3.16lb 1.64kg
Part No. 22-796685



MULTI BASE

Can be used as a V Base, Cone Base, Wedge Base and will accept a 3/8" chain

Net Weight: 2.0lb 0.9kg
Part No. 22-796025



CONVEX MULTI BASE

Multi-purpose vehicle stabilization with Chain Wedge for 3/8" chain, V and cone feature

Net Weight: 3.2lb 1.4kg
Part No. 22-796269



SPIKE BASE

The Spike Base has replaceable stainless steel spikes that will dig into sheet metal and a V and cone feature for Veh. Stabilization

Net Weight: 1.2lb 0.5kg
Part No. 22-797687



CONTOUR BASE

Contoured to grip surfaces dealing in vehicle stabilization kits

Net Weight: 1.7lb 0.8kg
Part No. 22-796270



MONOPOD HEAD / PULLEY

MonoPod Head / Pulley is designed for blind shaft elevator rescue, trench and high angle rescues

Net Weight: 7lb 3.2kg
Part No. 22-796540



MONOPOD / PULLEY ANGLE BASE

Designed originally for the MonoPod kit to be used in blind shaft elevator rescue but can be used in other locations

Net Weight: 7lb 3.2kg
Part No. 22-796590



MONOPOD / PULLEY ROOF PLATE

MonoPod / Pulley Roof Plate for use in conjunction with the MonoPod Head / Pulley

24" x 12" / 61cm x 30.5cm
Net Weight: 14lb 6.4kg
Part No. 22-796570



HITCH BASE

Can be utilized by putting into a 2" hitch receiver and in conjunction with the MonoPod kit so you can have a high point anchor off of your vehicle

Net Weight: 13.4lb 6.1kg
Part No. 22-796575



ANGLE BASE

The angle base can be used just like the 4x4 or 6x6 bases. Designed for use when you cannot make full contact around the header or sole Plate.

Net Weight: 1.6lb 0.7kg
Part No. 22-796092



BIPOD HEAD

The BiPod Head is to be used in conjunction with the (2) bipod base Plates to create the BiPod

Net Weight: 33 lb 15 kg
Part No. 22-796820



BIPOD BASE

The BiPod Base Plate is a 12 in / 30.5 cm base plate designed with the full articulating cup

Net Weight: 11.1lb 5.0kg
Part No. 22-796180E



CLAMP & CLEVIS

Designed for use with the Flying Raker and Midpoint brace kit in conjunction with the Raker Kits

Net Weight: 5.0lb 2.3kg
Part No. 22-796330



ANGLED RUBBER BASE

Angled rubber base used in conjunction with the elevator support arms lock elevator in position during rescues

Net Weight: 1.7lb 0.8kg
Part No. 22-796266



ELEVATOR SUPPORT ARMS

Left and Right Elevator Support Arms used in conjunction with angled rubber base to lock elevator in position during rescues

Net Weight: 8.5lb 3.9kg
Part No. 22-796260L or Part No. 22-796260R



TRIPOD HEAD

To be used in conjunction with either AcmeThread or LongShore struts to create a tripod

Net Weight: 9.0lb 4.1kg
Part No. 22-796010



VSK BASE 6

6 in / 15.2 cm base integrated with ratchet belt and anchor ring making vehicle stabilization quicker & easier

Net Weight: 18.5lb 8.4kg
Part No. 22-796331



VSK BASE 12

12 in / 30.5 cm base integrated with ratchet belt and anchor ring making vehicle stabilization quicker & easier

Net Weight: 23.5lb 10.6kg
Part No. 22-796308



Rescue Support Systems

Waler Rails



Part No.	Description	Net Weight: lb	kg	Ship Weight: lb	kg
22-796295	Spot Shore Rail 18 in / 45.7 cm	11.2	5.1	13.2	6.0
22-796281	Waler Rail 6 ft / 1.8 m	42.8	19.4	44.8	20.3
22-796283	Waler Rail 8 ft / 2.4 m	58.7	26.6	60.7	27.5

Waler Systems

Part No.	Net Weight: lb	kg	Ship Weight: lb	kg
22-796282	501.6	227.6	529.6	240.2

Part No.	Description	Quantity	Part No.	Description	Quantity
22-796281	Waler Rail 6 ft / 1.8 m	4	22-796285	Stop Block	16
22-796283	Waler Rail 8 ft / 2.4 m	4	22-796287	Waler Connector	4

Waler Accessories

Inside Mechanical Thrust Block

Net Weight: 10.4lb 4.7kg
Part No. 22-796401



Outside Mechanical Thrust Block

Net Weight: 21.6lb 9.8kg
Part No. 22-796411



L-Trench Adapter Set

Net Weight: 8.4lb 3.8kg
Part No. 22-796425



Waler Connector

Net Weight: 19.9lb 9.0kg
Part No. 22-796287



Waler Stop Block

Net Weight: 1.0lb 0.5kg
Part No. 22-796285



LongShore Raker Rails



Part No.	Description	Net Weight:	lb	kg	Ship Weight:	lb	kg
22-796258B	Raker Rail 4 48 in / 122 cm		13.7	6.2		14.7	6.7
22-796258C	Raker Rail 6 72 in / 183 cm		20.7	9.4		21.7	9.8

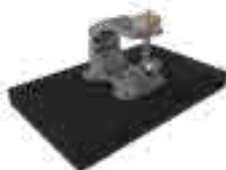
Raker Accessories



RAKER RAIL SPLICE
Net Weight: 7.5lb 3.4kg
Part No. 22-796469



45 DEGREE BASE
Net Weight: 13.5lb 6.1kg
Part No. 22-796690



NAILING PAD WITH CLAMP
Net Weight: 9.9lb 4.5kg
Part No. 22-796310



RAKER ANGLE BASE
Net Weight: 5.6lb 2.5kg
Part No. 22-796475



LATCH HOLDER
Net Weight: 4.2lb 1.9kg
Part No. 22-796689



RAKER RAIL LATCH
Net Weight: 3.2lb 1.5kg
Part No. 22-796250



RAKER JUNCTION BASE
Net Weight: 7.3lb 3.3kg
Part No. 22-796290



RAIL JUNCTION
Net Weight: 9.7lb 4.4kg
Part No. 22-796280



STRUT DISTRIBUTOR MODULE
Net Weight: 0.5lb 0.2kg
Part No. 22-796395



For use with single or dual controller.
Can connect up to 5 modules to shoot 6 struts at one time.

Air Supply Components



DUAL DEADMAN STRUT CONTROLLER G3
250 PSI / 17.2 BAR
Net Weight: 3.1lb 1.6kg
Part No. 22-796103G3



STRUT REGULATOR G3
5,500-0 PSI / 379.2-0 BAR
Part No. 22-895400G3 US
Net Weight: 3.8lb 1.7kg
Part No. 22-895400DG3 METRIC
Net Weight: 3.9lb 1.8kg



SINGLE TRENCH CUSHION CONTROLLER
7.25 PSI / 0.5 BAR
Net Weight: 5.0lb 2.3kg
Part No. 22-887310



VSK V2 CONTROLLER
29 PSI / 1.9 BAR
Net Weight: 2.4lb 1.0kg
Part No. 22-796V02

Air Hoses



3/8 IN / 9.5 mm diameter

	RED	YELLOW	GRAY	BLUE	BLACK	GREEN
x 16 ft / 5 m (2.5 lb / 1.1 kg)	22-890516	22-890515	22-890518	22-890514	22-890513	22-890517
x 32 ft / 10 m (4.5 lb / 2.0 kg)	22-890521	22-890520	22-890525	22-890523	22-890522	22-890524
x 50 ft / 15 m (7.0 lb / 3.2 kg)	22-890541	22-890542	22-890545	22-890543	22-890546	22-890544

1 IN / 25.4 mm diameter

	RED	BLUE
x 20 ft / 6.1 m (11.0 lb / 5.0 kg)	22-887400	22-887401

Rescue Support Systems

Trench Control Kit

Everything needed to address a trench rescue scenario. Deploy up to four struts at a time with the Strut Distributor Module and Dual Deadman Strut Controller

Part No.	Net Weight:	lb	kg
22-796TCK		53.4	34.2
22-796TCKD			
US			
METRIC			

Quantity	Part No.	Description
1	22-796103G3	Dual Deadman Strut Controller
1	22-895400G3	Strut Regulator G3 CGA / DIN
6	22-796395	Strut Distributor Module
1	22-890513	Air Hose, Black 16ft / 5m
2	22-890520	Air Hose, Yellow 32ft / 10m
2	22-890521	Air Hose, Red 32ft / 10m
1	22-890522	Air Hose, Black 32ft / 10m
1	22-890523	Air Hose, Blue 32ft / 10m
1	22-890524	Air Hose, Green 32ft / 10m
1	22-890525	Air Hose, Gray 32ft / 10m
1	22-796TCC	Carrying Case with Insert, Strut



Rescue Support Systems Accesories



Chain, 10mm X 6.1m w/ Hooks

Net Weight: 33.5lb 15.2kg
 Part No. 22-796165EU
 Part No. 22-796C1H



Ratchet Belt with Finger Hook 27 Ft / 8.2 M

Capacity: 3,300 lb / 1,497 kg Working
 10,000 lb / 4,536 kg Breaking
 Net Weight: 5.9lb 2.7kg
 Part No. 22-890553



Tie Down Keys with J Hook

Net Weight: 5.0lb 2.3kg
 Part No. 22-796161

Utilized with all VSK's
Gives ability to attach ratchet belt to almost any vehicle on the road.

Rescue Support Systems

Advanced Ty Strut Release Tool

The new patent pending Ty Strut Release Tool is designed to be used to place Paratech struts into a trench or hard to reach places and to tighten or loosen struts.

Net Weight: 2.2lb 1.0kg
Part No. 22-796845



Basic Ty Strut Release Tool

Ty Strut Release Tool without LockStroke Release Mechanism

Net Weight: 1.44lb .65kg
Part No. 22-796840



Lockstroke Release Mechanism Only

Net Weight: .71lb .32kg
Part No. 22-796847



Clip 3.0 / 7.6CM

(for AcmeThread & LockStroke Struts)
Net Weight: 0.6lb 0.3kg
Part No. 22-796182A

Clip 3.5 / 8.9CM

(for LongShore Struts)
Net Weight: 0.8lb 0.8kg
Part No. 22-796185A



Non-Slip Neoprene Pad

15 x 15 x 1 IN
38.1 x 38.1 x 2.5 CM
Net Weight: 12.0lb 5.4kg
Part No. 22-890015



Double Headed Picket

1 in / 2.5 cm x 40 in / 101.6 cm
STL Picket Double Headed
Net Weight: 9.5lb 4.3kg
Part No. 22-796P14



Rescue Guardian

Digital, wireless load cell, vibration and incline monitor.

Part No. 22-796670



Manual Compressor

(2 Stage)
18.5 x 7.6 x 5.0 IN
47.0 x 19.3 x 12.7 CM
Net Weight: 14.7lb 6.7kg
Part No. 22-800400



RSS Carrying Handle

For use with both AcmeThread and LockStroke Struts and the AcmeThread Strut Driver
Net Weight: 2.4lb 1.1kg
Part No. 22-797042E



Shoring Hammer

The multi-functional shoring hammer

Net Weight: 2.9lb 1.3kg
Part No. 22-796430



RSS Carrying Strap

For use with all Paratech Rescue Struts
Net Weight: 0.6lb 0.2kg
Part No. 22-790060



Trench Cushion

18 IN / 45.7 CM
LIFT: 3.3 US TON / 3.0 METRIC TON
Low pressure square cushions that can fill up to an 18 in (46 cm) void.
Net Weight: 28.0lb 12.7kg
Part No. 22-887060



Rescue Support Systems

Monopod/Pulley Kit

The Monopod Head & Pulley attach to the 610 LongShore Strut and can be used in applications such as high angle, elevator shaft, confined space and trench rescue. The kit includes the Monopod Head & Pulley, Tri-Anchor Ring, Angle Base, Roof Plate and also includes a black ballistic nylon carrying case.

Product Features:

- Pulley assembly allows the rope to come down the outside of the tube for ease of hoisting (5,000 lb / 2,268 kg capacity)
- 1,000 lb / 454 kg load capacity per hoist ring (4)
- Can be used with a life safety rope of up to 0.5 inch / 1.3 cm
- Monopod Head & Pulley Assembly is constructed of lightweight aluminum and stainless steel for strength and durability

Part No.	Description	Quantity
22-796535	Carrying Case, Monopod/Pulley Kit	1
22-796540	Monopod Head/Pulley	1
22-796595	Tri-Anchor	1
22-796570	Monopod/Pulley Roof Plate	1
22-796590	Monopod/Pulley Angle Base	1

Part No.	Net Weight: lb	kg
22-796530	43.0	19.5



HITCH BASE (optional)
Can be utilized by putting into a 2" hitch receiver and in conjunction with the Monopod kit so you can have a high point anchor off of your vehicle
Part No. 22-796575

Bipod Kit

The Bipod Kit is designed for use in various lifting and moving applications. It can be utilized in high angle, cliff overhangs, grain elevator rescue, confined space, trench, mine and open pit rescues. The kit includes Bipod Head and two Hinged Base Plates with Anchor Rings.

Product Features:

- 60° maximum spread angle with parallel max indication lines
- High strength hinged rotating anchor Plate
- Bipod Conversion Kit is constructed of lightweight aluminum and stainless steel for strength and durability

Part No.	Description	Quantity
22-796180E	Bipod Base Plate	2
22-796820	Bipod Head	1
22-796818	Carrying Case, Bipod	1

Part No.	Net Weight: lb	kg
22-796810	60.6	27.5



Tripod Kit

Designed to complement the Rescue Support System line, the Tripod kit is manufactured of lightweight aluminum and stainless steel for strength and durability. This kit is designed for use with your rescue struts already used in trench rescue, building collapse and vehicle stabilization. Attach the Tripod head to an AcmeThread, LockStroke or LongShore Strut and/or Extension to create a strong, stable support for tripod use as a jack stand and/or high support. A durable carrying case makes transport easy.

Part No.	Description	Quantity
22-796010	Tripod Head	1
22-796150	Hinged Base with Anchor Ring	3
22-796155	30 ft Chain with Grab Hook	1
22-796305	Carrying Case, Tripod	1

Part No.	Net Weight: lb	kg
22-796300	63.0	28.6



Elevator Support Unit Adapter Kit

Paratech's Elevator Support Unit (ESU) safely stabilizes an elevator and prevents it from moving. When deployed, the ESU causes zero to minimal damage to elevator cars and affords rescue teams precious time to extricate passengers and save lives. Two unique rescue base and end Plates form the core components of this system. An Angled Rubber Base attaches to either Rescue Strut and grips the floor, while the Elevator Support Arm attaches to the top of the Rescue Strut and hooks under the elevator car.

Part No.	Net Weight: lb	kg
22-796260	27.2	12.3

Part No.	Description	Quantity
22-796260L	Elevator Support Left Arm	1
22-796260R	Elevator Support Right Arm	1
22-796266	Angled Rubber Base	6
22-000915	Case, ESU Kit	1



Elevator Shaft Rescue Kit (ESR)

Elevator Shaft Rescue (ESR) Kit: designed in conjunction with City of Chicago and IFSI (University of Illinois Fire Service Institute) rescue professionals, this kit makes elevator shaft rescue easy and efficient through the creation of a wedged truss bar.

Part No.	Net Weight: lb	kg
22-796890K	41.48	19.44

- Fast and easy set up
- Can be set up in doorways, windows, elevator doors, blind shaft elevator hatches, industrial high points, ship board applications, etc.
- Adjustable base for longer door thresholds
- Removable angle on base for window high points
- Rubber foot plate does not mark or damage marble, granite or wooden floors

Part No.	Description	Quantity
22-796266	Angled Rubber Base	2
22-796891	T-Junction	2
22-796905	Adjustable Hinged Base	2
22-796430	Shoring Hammer	1
22-796895	Header Swivel Base	2

*Struts Not Included in Kit



Trench Cushion Kit

Designed to tackle one of the biggest challenges in trench collapse rescue, this kit includes the equipment you need to quickly and safely support your shoring panels. With our proven trench cushion system you can significantly reduce the time needed to backfill your shoring panels and maintain a vertical surface for support. Included in the kit are two low pressure square cushions with a 3.3 US ton (3 m ton) capacity that can fill up to an 18 in (46 cm) void. Each cushion is fitted with o-ring harnesses for ease of lowering into the trench and a yellow centering cross to help in positioning the cushions along the sides of the trench wall. Combined with our Paratech Rescue Struts this kit will equip you with the right tools for your next trench rescue.

Part No.	Net Weight: lb	kg
22-887070	85.5	38.8

Part No.	Description	Quantity
22-887060	Trench Cushion 18 in / 45.7 cm 3.3 US Ton / 3.0 m ton Capacity	2
22-887310	Single Cushion Controller 7.25 psi / 0.5 bar	2
22-887400	Air Hose 1 in / 25.4 cm dia. x 20 ft / 6.1m Red	1
22-887401	Air Hose 1 in / 25.4 cm dia. x 20 ft / 6.1m Blue	1
22-890513	Air Hose 3/8 in / 9.5 dia. x 16 ft / 5m Black	1



Rescue Support Systems

Solid Sole Rakers & Accessories

Paratech offers the necessary accessories to convert our LongShore Struts into a fully deployable raker system that is fast, strong and easy to install. Paratech's innovative Raker accessories and LongShore Struts meet US&R requirements for strength and deployability. The Paratech LongShore System offers unique features and benefits ensuring proven performance every time the system is deployed.

Absolute Raker

Paratech once again sets a new standard, no wood, no pins, no chains...no hassle. The Absolute Raker provides flexibility, functionality and economy. Never worry about wood again—fully deployable in minutes—or easily turn your existing Paratech Raker into an Absolute Raker, with the Standard to Absolute Upgrade Kit. Interoperational with all Paratech Rescue Support Systems, as always.



Absolute Raker Set

Part No.	Description	lb	kg
22-796984	Absolute Raker Set	795.3 lb	360.7 kg

Part No.	Description	Quantity
22-796180C	Hinged Base 12 w/ Anchor Ring	2
22-796250	Raker Rail Latch	4
22-796258C	Raker Rail 6	4
22-796280	Raker Rail Junction	2
22-796290	Raker Junction Base	2
22-796330	Clamp and Clevis	12
22-796342	LongShore Extension 235	7
22-796350	LongShore Adjustable Brace B57	7
22-796356	LongShore Extension 435	2
22-796360	LongShore Strut 610	4
22-796376	LongShore Extension 635	2
22-796469	Raker Rail Splice	2
22-796475	Raker Angle Base	2
22-796656	Rail 4 Latch Holder	1

Double Absolute Raker Set

The double absolute raker set can create an 18 ft (5,5m) vertical insertion point double raker, or be recombined to create 3 separate flying rakers with up to 40 ft (12,2m) of horizontal coverage.

Part No.	Description	lb	kg
22-796981	Double Absolute Raker Set	795.3 lb	360.7 kg

Part No.	Description	Quantity
22-796180C	Hinged Base 12 w/ Anchor Ring	6
22-796250	Raker Rail Latch	12
22-796258C	Raker Rail 6	6
22-796280	Raker Rail Junction	2
22-796290	Raker Junction Base	2
22-796330	Clamp and Clevis	24
22-796348	LongShore Adjustable Brace B23	6
22-796350	LongShore Adjustable Brace B57	9
22-796341	LongShore Extension 135	2
22-796342	LongShore Extension 235	9
22-796360	LongShore Strut 610	6
22-796376	LongShore Extension 635	6
22-796469	Raker Rail Splice	4
22-796475	Raker Angle Base	6
22-796689	Latch Holder	3
22-796430	Shoring Hammer	2



Absolute Flying Raker

Paratech fully mechanical Absolute Flying Raker Sets leave the wood behind. Stronger, faster and easier than wood, the Absolute Flying Raker in 8 ft (2.4 m) sets, allow rescue teams to build rakers around the rubble pile.

Use the Woodless Flying Raker kit upgrade to upgrade a Standard Flying Raker to an Absolute Woodless Flying Raker. Interoperational with all Paratech Rescue Support Systems, as always.



Absolute Flying Raker Set

Part No.	Description	lb	kg
22-796984F	Absolute Flying Raker Set	535.9 lb	243.1 kg

Part No.	Description	Quantity
22-796180C	Hinged Base 12 w/ Anchor Ring	2
22-796258C	Raker Rail 6	2
22-796330	Clamp and Clevis	12
22-796342	LongShore Extension 235	4
22-796350	LongShore Adjustable Brace B57	5
22-796348	LongShore Adjustable Brace B23	2
22-796356	LongShore Extension 435	2
22-796360	LongShore Strut 610	2
22-796376	LongShore Extension 635	2
22-796475	Raker Angle Base	2
22-796656	Rail 4 Latch Holder	1
22-796250	Raker Rail Latch	4



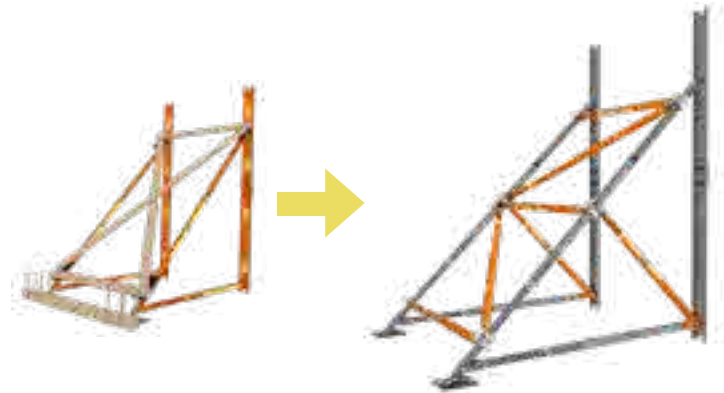
Rescue Support Systems

Standard to Absolute Raker Upgrade Kit

The standard to absolute raker upgrade kit changes your deployable solid sole raker into an absolute raker. It removes the need for wood bracing and replaces it with high strength fully mechanical cross-bracing and midpoint braces.

Part No.	Description	lb	kg
22-796983	Standard Raker to Absolute Raker Upgrade	354.3 lb	160.7 kg

Part No.	Description	Quantity
22-796280	Rail Junction	2
22-796330	Clamp and Clevis	12
22-796342	LongShore Extension 235	5
22-796350	LongShore Adjustable Brace B57	7

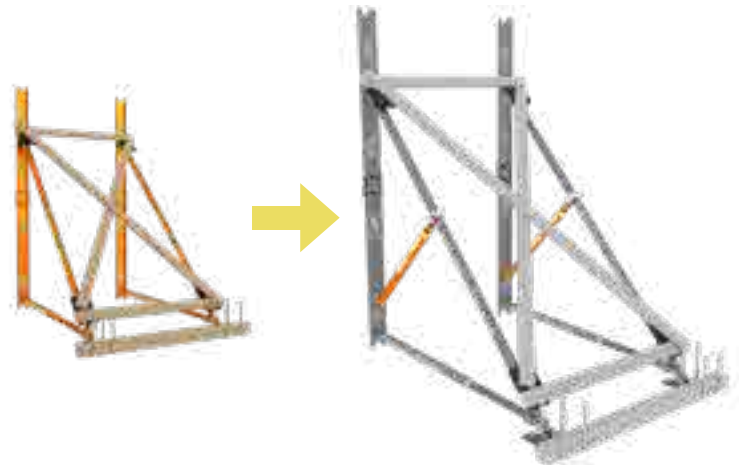


Raker Midpoint Brace Kit

The mid point brace kit can be utilized with the Raker Sets and will greatly increase the strength of your Raker Kit. Adding this item to your Raker Set will guarantee you have the strongest raker.

Kit Part No.	Net Weight:	lb	kg
22-796484		97.6	44.3

Part No.	Description	Quantity
22-796350	Adjustable Brace Model B57	2
22-796250	Raker Rail Latch	2
22-796330	Clamp 335 & Clevis	2

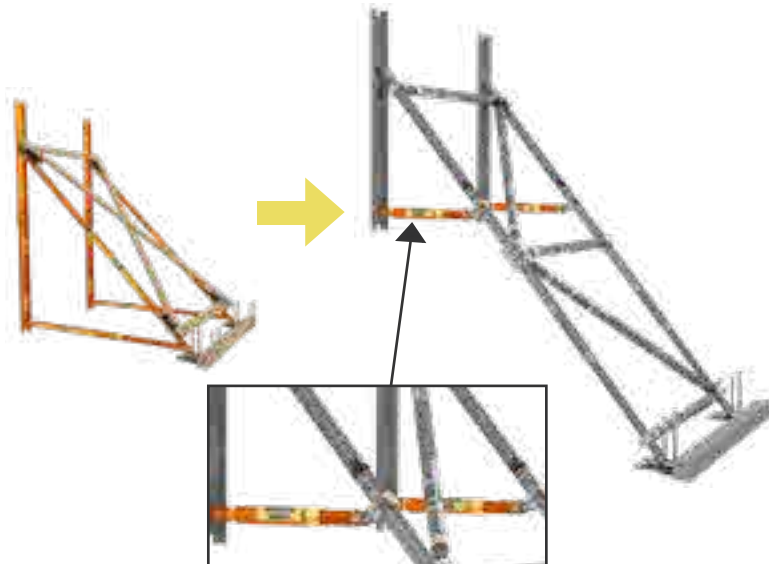


Flying Raker Kit

Add this kit to your Standard Raker Kit to turn it into a Flying Raker.

Kit Part No.	Net Weight:	lb	kg
22-796486		46.8	21.2

Part No.	Description	Quantity
22-796348	Adjustable Brace Model B23	2
22-796250	Raker Rail Latch	2
22-796330	Clamp 335 & Clevis	2

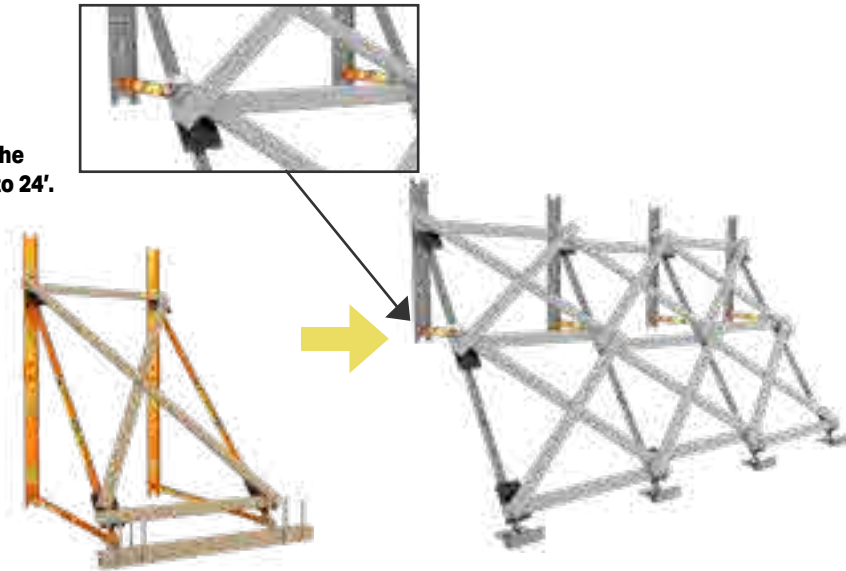


Raker Expansion Kit

Increase your Raker Set capacity by adding this additional cache of equipment and increase your wall support capacity from 8' to 24'.

Kit Part No.	Net Weight: lb	kg
22-796485	143.8	65.2

Part No.	Description	Quantity
22-796180C	Base Plate 12 12 in / 30.5 cm	2
22-796475	Raker Angle Base	2
22-796310	Nailing Pad with Clamp	6
22-796486	Flying Raker Kit (qty. 2 kits below)	2
22-796348	Adjustable Brace Model B23	4
22-796250	Raker Rail Latch	4
22-796330	Clamp 335 & Clevis	4



Woodless Flying Raker Brace Kit

Use this kit to upgrade your Flying Raker to an Absolute Flying Raker

Part No.	Description	lb	kg
22-796487	Woodless Flying Raker Brace Kit Absolute Raker Upgrade	231.9 lb	105.2 kg

Part No.	Description	Quantity
22-796330	Clamp and Clevis	10
22-796342	LongShore Extension 235	2
22-796350	LongShore Adjustable Brace B57	5



High Strength Structural Kit

The Paratech High Strength Structural Kit is designed to cope with the heaviest loads seen in USAR. The HSSK combines 3 heavy duty LongShore shoring struts, the strongest shores Paratech produces, and combines them into a single shoring configuration using a simple and easy to install hand tightened tri-brace. The tri-brace ties the shores together and provides rescuers 3X the load rating listed shoring capacity of the tabulated data on the LongShore strut at a given length. The HSSK can be used to shore the extremely heavy loads at length such as replacing damaged columns in a compromised structure.

Part No.	Description	lb	kg
22-796HSSK	High Strength Structural Kit	231.9 lb	105.2 kg

Part No.	Description	Quantity
22-796395	Strut Distributor Module	2
22-796399	Tri-Brace	1
22-796680	Tri-Base	2
22-890520	32 ft Hose, Yellow w/ Couplings	1
22-890521	32 ft Hose, Red w/ Couplings	1
22-890522	32 ft Hose, Black w/ Couplings	1



Rescue Support Systems

Basic 12 Shore Trench Kit

This kit gives the rescuer the ability to construct up to 12 shores for use in a trench rescue. With the available air controls and vibrant colored hoses, this is a great starter trench kit.



2 - Strut Extension 12 in / 30 cm 22-796012



4 - Strut Extension 24 in / 61 cm 22-796024



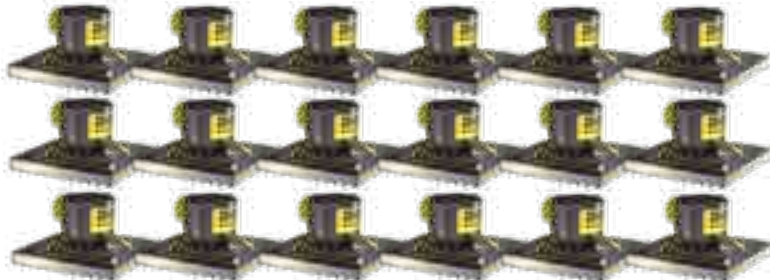
4 - AcmeThread Struts 25-36 in / 64-91 cm 22-796200



8 - AcmeThread Struts 37-58 in / 94-147 cm 22-796202



6 - Square Rigid Base 6 in / 15.2 cm 22-796070



18 - Square Swivel Base 6 in / 15.2 cm 22-796060



2 - Air Hose
3/8 in / 9.5 mm dia. x 16 ft / 5 m
Yellow 22-890515



2 - Air Hose
3/8 in / 9.5 mm dia. x 32 ft / 10 m
Yellow 22-890520



2 - Air Hose
3/8 in / 9.5 mm dia. x 16 ft / 5 m
Red 22-890516



2 - Air Hose
3/8 in / 9.5 mm dia. x 32 ft / 10 m
Red 22-890521



1 - Dual Deadman Strut
Controller G3
250 psi / 17.2 bar
22-796103G3



4 - Shoring Hammer
22-796430



1 - Strut Regulator G3
5,500-300 psi / 379.2-20.7 bar
22-895400G3

Kit Part No.		Net Weight: lb	kg
22-796860	US	374.6	
22-796860D	Metric		170.2

Part No.	Description	Quantity
22-796200	AcmeThread Strut 25-36 in / 64-91 cm	4
22-796202	AcmeThread Strut 37-58 in / 94-147 cm	8
22-796012	Strut Extension 12 in / 30 cm	2
22-796024	Strut Extension 24 in / 61 cm	4
22-796060	Square Swivel Base 6 in / 15.2 cm	18
22-796070	Square Rigid Base 6 in / 15.2 cm	6
22-796103G3	Dual Deadman Strut Controller G3 250 psi / 17.2 bar	1
22-895400G3	Strut Regulator G3 CGA / DIN 5,500-0 psi / 379.2-0 bar	1
22-890515	Air Hose 3/8 in / 9.5 mm dia. x 16 ft / 5 m Yellow	2
22-890520	Air Hose 3/8 in / 9.5 mm dia. x 32 ft / 10 m Yellow	2
22-890516	Air Hose 3/8 in / 9.5 mm dia. x 16 ft / 5 m Red	2
22-890521	Air Hose 3/8 in / 9.5 mm dia. x 32 ft / 10 m Red	2
22-796430	Shoring Hammer	4



16 Shore Trench Kit

This kit gives the rescuer the ability to construct up to 16 shores for use in a trench rescue. With the available Trench Cushions to fill void spaces and the air controls & vibrant colored hoses, this is a great kit for your Trench Rescue needs.



4 - Strut Extension 6 in / 15 cm 22-796017



6 - Strut Extension 12 in / 30 cm 22-796012



6 - Strut Extension 24 in / 61 cm 22-796024



2 - LockStroke Struts 25-36 in / 64-91 cm 22-796000



2 - AcmeThread Struts 37-58 in / 94-147 cm 22-796202



4 - AcmeThread Struts 25-36 in / 64-91 cm 22-796200



6 - AcmeThread Struts 19-25 in / 48-64 cm 22-796206



2 - AcmeThread Struts 12-15 in / 31-38 cm 22-796212



1 - Dual Deadman Strut Controller G3 250 psi / 17.2 bar 22-796103G3



4 - Shoring Hammer 22-796430



1 - Strut Regulator G3 5,500-300 psi / 379.2-20.7 bar 22-895400G3



2 - Trench Cushion 18 in / 45.7 & 3.3 US Ton / 3.0 Metric Ton Capacity 22-887060



2 - Single Cushion Controller 7.25 psi 22-887310



1 - Air Hose 1 in / 25.4 mm dia. x 20 ft / 6.1 m Red 22-887400

Kit Part No.	Net Weight: lb	kg
22-796862	US	445.8
22-796862D	Metric	202.6

Part No.	Description	Quantity
22-796212	AcmeThread Strut 12-15 in / 31-38 cm	2
22-796206	AcmeThread Strut 19-25 in / 48-64 cm	6
22-796200	AcmeThread Strut 25-36 in / 64-91 cm	4
22-796202	AcmeThread Strut 37-58 in / 94-147 cm	2
22-796000	LockStroke Strut 25-36 / 64-91 cm	2
22-796017	Strut Extension 6 in / 15 cm	4
22-796012	Strut Extension 12 in / 30 cm	6
22-796024	Strut Extension 24 in / 61 cm	6
22-796103G3	Dual Deadman Strut Controller G3 250 psi / 17.2 bar	1
22-895400G3	Strut Regulator G3 5,500-300 psi / 379.2-20.7 bar	1
22-890520	Air Hose 3/8 in / 9.5 mm dia. x 32 ft / 10 m Yellow	2
22-890521	Air Hose 3/8 in / 9.5 mm dia. x 32 ft / 10 m Red	2
22-890513	Air Hose 3/8 in / 9.5 mm dia. x 16 ft / 5 m Black	1
22-796395	Strut Distributor Module (2 coupling, 1 nipple)	4
22-796060	Square Swivel Base 6 in / 15.2 cm	24
22-796070	Square Rigid Base 6 in / 15.2 cm	8
22-796430	Shoring Hammer	4

Part No.	Description	Quantity
22-887070	Trench Cushion Kit (qty. 1 kit below)	1
22-887060	Trench Cushion 18 in / 3.25 ton capacity	2
22-887310	Single Cushion Controller 7.25 psi	2
22-887400	Air Hose 1 in / 25.4 mm dia. x 20 ft / 6.1 m Red	1
22-887401	Air Hose 1 in / 25.4 mm dia. x 20 ft / 6.1 m Blue	1
22-890513	Air Hose 3/8 in / 9.5 mm dia. x 16 ft / 5 m Black	1



8 - Square Rigid Base 6 in / 15.2 cm 22-796070



4 - Strut Distributor Module (2 couplings, 1 nipple) 22-796395



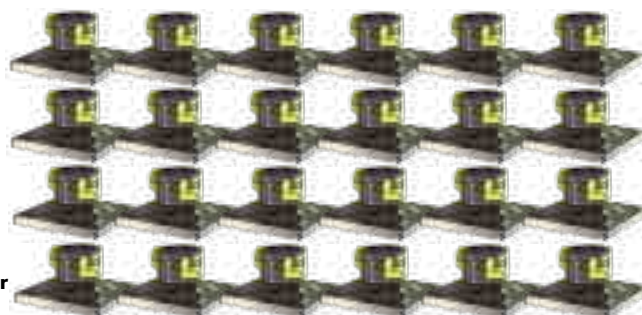
1 - Air Hose 3/8 in / 9.5 mm dia. x 16 ft / 5 m Black 22-890513



2 - Air Hose 3/8 in / 9.5 mm dia. x 32 ft / 10 m Yellow 22-890520



2 - Air Hose 3/8 in / 9.5 mm dia. x 32 ft / 10 m Red 22-890521



24 - Square Swivel Base 6 in / 15.2 cm 22-796060



1 - Air Hose 1 in / 25.4 mm dia. x 20 ft / 6.1 m Blue 22-887401



1 - Air Hose 3/8 in / 9.5 mm dia. x 16 ft / 5 m Black 22-890513

Rescue Support Systems

Light US&R Rescue Strut System

This system affords the rescuer the ability to tackle most structural collapse scenarios. The system includes (1) Raker set and numerous Rescue Struts and components which would be a great start to any Fire Department looking to be more involved in structural collapse incidents.



2 - LongShore 610 Struts 72-116 in / 183-295 cm 22-796360



2 - Rescue Guardian
22-796670



2 - AcmeThread Struts 56-88 in / 142-224 cm 22-796204



2 - AcmeThread Struts 37-58 in / 94-147 cm 22-796202



2 - Strut Extension 12 in / 30 cm 22-796012



2 - AcmeThread Struts 25-36 in / 64-91 cm 22-796200



2 - AcmeThread Struts 12-15 in / 31-38 cm 22-796212



2 - Strut Extension 36 in / 91 cm 22-796036



2 - AcmeThread Struts 19-25 in / 48-64 cm 22-796206



2 - Strut Extension 24 in / 61 cm 22-796024



1 - Air Hose
3/8 in / 9.5 mm dia. x 32 ft / 10 m Red
22-890521

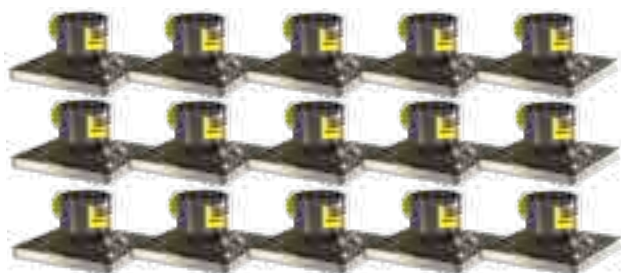


1 - Air Hose
3/8 in / 9.5 mm dia. x 32 ft / 10 m Black
22-890522



1 - Air Hose
3/8 in / 9.5 mm dia. x 32 ft / 10 m Yellow
22-890520

Rescue Support Systems



15 - Square Swivel Base 6 in / 15.2 cm 22-796060



15 - Square Rigid Base 6 in / 15.2 cm 22-796070



4 - Shoring Hammer
22-796430



1 - Dual Deadman
Strut Controller G3
250 psi / 17.2 bar
22-796103G3



1 - Strut Regulator G3
5,500-300 psi / 379.2-20.7 bar
22-895400G3

22-796984 Absolute Raker Set



7 - LongShore Extension 235 24 in / 61 cm 22-796342



2 - Raker Junction Base
22-796290



2 - Raker Angle Base
22-796475



2 - Raker Rail Junction
22-796280



4 - LongShore Strut 610 72-116 in / 183-295 cm 22-796360



1 - Latch Holder
22-796689



4 - Raker Rail Latch 22-796250



2 - LongShore Extension 435 48 in / 122 cm 22-796356



2 - Raker Rail Splice 22-796469



2 - LongShore Extension 635 67 in / 170 cm 22-796376



7 - LongShore Adjustable Brace B57 60-85 in / 152-216 cm 22-796350



4 - Raker Rail 6 72 in / 183 cm 22-796258C



12 - Clamp and Clevis 22-796310



2 - Hinged Base Plate 12 in / 30.5 cm
22-796180C

System Part No.		Net Weight: lb	kg
-----------------	--	----------------	----

22-796901	US	740.1	
22-796901M	Metric		335.7

Part No.	Description	Quantity
----------	-------------	----------

22-796212	AcmeThread Strut 12-15 in / 31-38 cm	2
22-796206	AcmeThread Strut 19-25 in / 48-64 cm	2
22-796200	AcmeThread Strut 25-36 in / 64-91 cm	2
22-796202	AcmeThread Strut 37-58 in / 94-147 cm	2
22-796204	AcmeThread Strut 56-88 in / 142-224 cm	2
22-796360	LongShore Strut 610, 72-116 in / 183-295 cm	2
22-796012	Strut Extension 12 in / 30 cm	2
22-796024	Strut Extension 24 in / 61 cm	2
22-796036	Strut Extension 36 in / 91 cm	2
22-796060	Square Swivel Base 6 in / 15.2 cm	15
22-796070	Square Rigid Base 6 in / 15.2 cm	15
22-796103G3	Dual Deadman Strut Controller G2 250 psi / 17.2 bar	1
22-895400G3	Strut Regulator G3 CGA / DIN 1 5,500-0 psi / 379.2-0 bar	1
22-796670	Rescue Guardian 20,000 lbs.	2
22-890520	Air Hose 3/8 in / 9.5 mm dia. x 32 ft / 10 m Yellow	1
22-890521	Air Hose 3/8 in / 9.5 mm dia. x 32 ft / 10 m Red	1
22-890522	Air Hose 3/8 in / 9.5 mm dia. x 32 ft / 10 m Black	1
22-796430	Shoring Hammer	4

22-796984	Absolute Raker Set (qty. 1 kit below)	1
-----------	---------------------------------------	---

22-796180C	Hinged Base 12 w / Anchor Ring	2
22-796250	Raker Rail Latch	4
22-796258C	Raker Rail 6	4
22-796280	Raker Rail Junction	2
22-796290	Raker Junction Base	2
22-796330	Clamp and Clevis	12
22-796342	LongShore Extension 235	7
22-796350	LongShore Adjustable Brace B57	7
22-796356	LongShore Extension 435	2
22-796360	LongShore Strut 610	4
22-796376	LongShore Extension 635	2
22-796469	Raker Rail Splice	2
22-796475	Raker Angle Base	2
22-796656	Rail 4 Latch Holder	1

Rescue Support Systems

US&R Rescue Strut System

The US&R Rescue Strut System is one of the most complete structural collapse systems that has been standardized by the FEMA US&R teams. For any team serious about Urban Search & Rescue, this is the system to make it happen. The system includes (2) 6' Raker sets and numerous Rescue Struts and components to handle almost any disaster that the rescuers are faced with.



4 - LongShore 610 Struts 72-116 in / 183-295 cm 22-796360



4 - Rescue Guardian 22-796670



4 - AcmeThread Struts 56-88 in / 142-223 cm 22-796204



4 - AcmeThread Struts 37-58 in / 94-147 cm 22-796202



4 - Strut Extension 12 in / 30 cm 22-796012



4 - AcmeThread Struts 12-15 in / 31-38 cm 22-796212



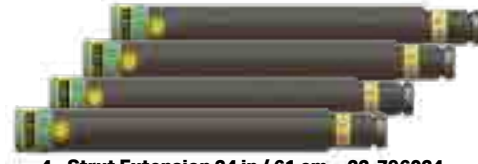
4 - AcmeThread Struts 25-36 in / 64-91 cm 22-796200



4 - AcmeThread Struts 19-25 in / 48-64 cm 22-796206



4 - Strut Extension 36 in / 91 cm 22-796036



4 - Strut Extension 24 in / 61 cm 22-796024

22-796984 Absolute Raker Set



7 - LongShore Extension 235 24 in / 61 cm 22-796342



2 - Raker Junction Base 22-796290



2 - Raker Angle Base 22-796475



2 - Raker Rail Junction 22-796280



4 - LongShore Strut 610 72-116 in / 183-295 cm 22-796360



1 - Latch Holder 22-796689



4 - Raker Rail Latch 22-796250



2 - LongShore Extension 435 48 in / 122 cm 22-796356



2 - Raker Rail Splice 22-796469



2 - LongShore Extension 635 67 in / 170 cm 22-796376



7 - LongShore Adjustable Brace B57 60-85 in / 152-216 cm 22-796350



4 - Raker Rail 6 72 in / 183 cm 22-796258C



12 - Clamp and Clevis 22-796310



2 - Hinged Base Plate 12 in / 30.5 cm 22-796180C

Rescue Support Systems



30 - Square Swivel Base 6 in / 15.2 cm 22-796060



2 - Strut Regulator G3
5,500-0 psi
379.2-0 bar
22-895400G3



30 - Square Rigid Base 6 in / 15.2 cm 22-796070



2 - Dual Deadman
Strut Controller G3
250 psi / 17.2 bar
22-796103G3



2 - Air Hose
3/8 in / 9.5 mm dia.
x 32 ft / 10m Yellow
22-890520



2 - Air Hose
3/8 in / 9.5 mm dia.
x 32 ft / 10 m Red
22-890521



2 - Air Hose
3/8 in / 9.5 mm dia.
x 32 ft / 10 m Black
22-890522



8 - Shoring Hammer
22-796430

System Part No.	Net Weight: lb	kg
-----------------	----------------	----

22-796900	US	1713.6
22-796900M	Metric	777.3

Part No.	Description	Quantity
----------	-------------	----------

22-796212	AcmeThread Strut 12-15 in / 31-38 cm	4
22-796206	AcmeThread Strut 19-25 in / 48-64 cm	4
22-796200	AcmeThread Strut 25-36 in / 64-91 cm	4
22-796202	AcmeThread Strut 37-58 in / 94-147 cm	4
22-796204	AcmeThread Strut 56-88 in / 142-224 cm	4
22-796360	LongShore Strut 610, 72-116 in / 183-295 cm	4
22-796012	Strut Extension 12 in / 30 cm	4
22-796024	Strut Extension 24 in / 61 cm	4
22-796036	Strut Extension 36 in / 91 cm	4
22-796060	Square Swivel Base 6 in / 15.2 cm	30
22-796070	Square Rigid Base 6 in / 15.2 cm	30
22-796103G3	Dual Deadman Strut Controller G3 250 psi / 17.2 bar	2
22-895400G3	Strut Regulator G3 CGA / Din 2 5,500-0 psi / 379.2-0 bar	2
22-796670	Rescue Guardian 20,000 lbs.	4
22-890520	Air Hose 3/8 in / 9.5 mm dia. x 32 ft / 10 m Yellow	2
22-890521	Air Hose 3/8 in / 9.5 mm dia. x 32 ft / 10 m Red	2
22-890522	Air Hose 3/8 in / 9.5 mm dia. x 32 ft / 10 m Black	2
22-796430	Shoring Hammer	8

22-796984	Absolute Raker Set (qty. 2 kits below)	2
-----------	--	---

22-796180C	Hinged Base 12 w/ Anchor Ring	4
22-796250	Raker Rail Latch	8
22-796258C	Raker Rail 6	8
22-796280	Raker Rail Junction	4
22-796290	Raker Junction Base	4
22-796330	Clamp and Clevis	24
22-796342	LongShore Extension 235	14
22-796350	LongShore Adjustable Brace B57	14
22-796356	LongShore Extension 435	4
22-796360	LongShore Strut 610	8
22-796376	LongShore Extension 635	4
22-796469	Raker Rail Splice	4
22-796475	Raker Angle Base	4
22-796656	Rail 4 Latch Holder	2

22-796984 Absolute Raker Set



7 - LongShore Extension 235 24 in / 61 cm 22-796342



2 - Raker Junction Base
22-796290



2 - Raker Angle Base
22-796475



2 - Raker Rail Junction
22-796280



4 - LongShore Strut 610 72-116 in / 183-295 cm 22-796360



1 - Latch Holder
22-796689



4 - Raker Rail Latch 22-796250



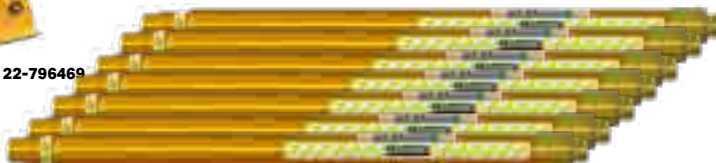
2 - LongShore Extension 435 48 in / 122 cm 22-796356



2 - Raker Rail Splice 22-796469



2 - LongShore Extension 635 67 in / 170 cm 22-796376



7 - LongShore Adjustable Brace B57 60-85 in / 152-216 cm 22-796350



4 - Raker Rail 6 72 in / 183 cm 22-796258C



12 - Clamp and Clevis 22-796310



2 - Hinged Base Plate 12 in / 30.5 cm
22-796180C

Available in five languages.



CERTIFICATE NO.
ISO9001:2008

**We take our job
seriously because
we know your job
is often a matter
of life or death.**



A division of PT Hydraulics Australia PTY LTD
19 Ricketts Rd Mt Waverley VIC 3149
ph: 03 9562 8800 e: rescue@ptha.com.au
www.ptrescue.com.au

www.paratech.com