

C-TEC

Connect & Lift



A Trusted IDEX
Fire & Safety Brand



C-TEC

- Reduced weight
- Heavy load, great heights
- Connect tool-free
- High angle of inclination

The C-TEC combine the lifting power of the mini lifting bag and the lifting height of the Vetter 1 bar lifting bag. This means you always adapt the required lifting height to the individual operational scenario and at the same time utilise the power of a modern 12-bar system. Thanks to the tool-free connection technology, the bags are ready to use in a few seconds.

The load plate integrated in the C-TEC ensures high stability and load capacity at an angle of inclination of up to 45° during the lifting process. Also the lifting point loads and objects with a sharp or pointed surface is also possible without additional adapters.



Load plate with
Connecting bolt



Filling connection in the edge area



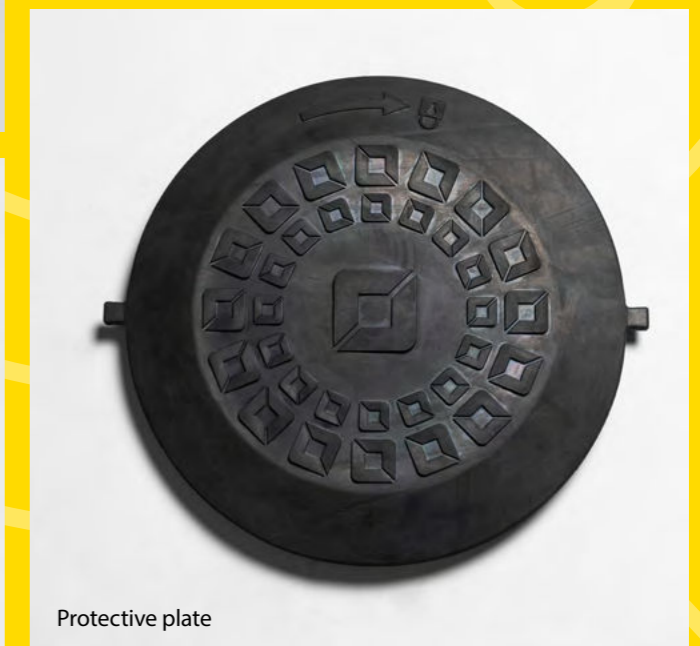
Connecting bolt



Load plate



Carrying strap



Protective plate



In operation..

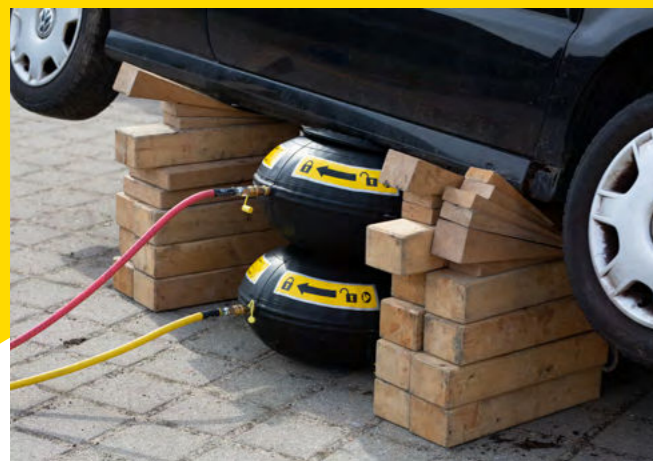
- rescuing trapped persons
- creating accesses
- natural disasters, collapsed buildings and accidents

Good reasons:

- conserves resources since little air is required
- easy to handle
- Connect tool-free
- can be used individually or connected
- do not need to be emptied for dismantling

Guaranteed quality:

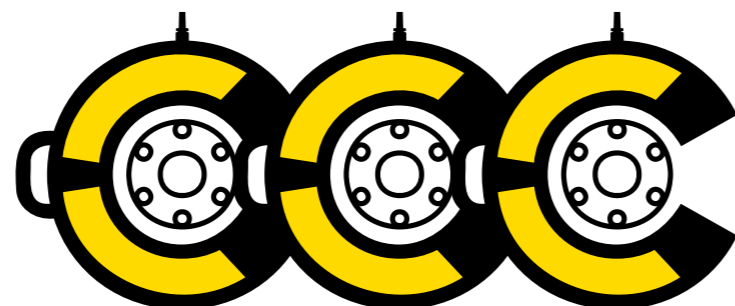
- individually tested (inspection seal)
- factor of safety of more than 4:1
- complies with EN 13731



You require a lifting bag set that is optimally matched to your needs?
We will be pleased to put together an individual set for you. It's your choice:

- 3 different lifting bag sizes
- 3 controllers (2 deadman versions, 1 fitting version)
- variety of accessories
- many different compressed air sources (e.g. compressed air cylinder, compressor, compressed air connection on the vehicle)

- [instagram.com/vettergmbh](https://www.instagram.com/vettergmbh)
- [facebook.com/vettergmbh](https://www.facebook.com/vettergmbh)
- [linkedin.com/company/vettergmbh](https://www.linkedin.com/company/vettergmbh)
- [youtube.com/vettergmbh](https://www.youtube.com/vettergmbh)



Technical data*

C-TEC 12 bar/174 psi	Lifting power, max.**	End lifting capacity, max.	Lifting height at end lifting capacity	Lifting height, max**
	t/US to	t/US to	cm/inch	cm/inch
C-TEC 30 1316004600	30,1 33,2	7 7	19,5 7,7	27,5 10,8
C-TEC 75 1316004700	74,7 82,3	12 13	33,2 13,1	43,5 17,1
C-TEC 172 1316003900	171,8 189,3	15 16	59 23,2	69 27,2

*Subject to change without notice | **without load

C-TEC 12 bar/174 psi	Luftinhalt bei 12 bar Liter/cu. ft.	Durchmesser cm/inch	Gewicht, ca. kg/lbs	Einschubhöhe cm/inch
C-TEC 30 1316004600	328 11,57	56,5 22,2	12 26,5	7 2,8
C-TEC 75 1316004700	1.269 44,75	89 35,0	22,4 49,4	7 2,8
C-TEC 172 1316003900	5.048 178	135 53,2	58 127,9	11,5 4,5

*Subject to change without notice

C-TEC:

Operating pressure: 12 bar (174 psi)

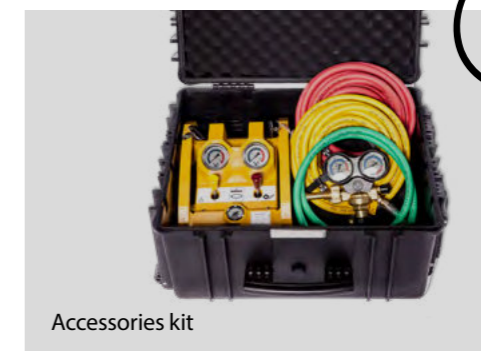
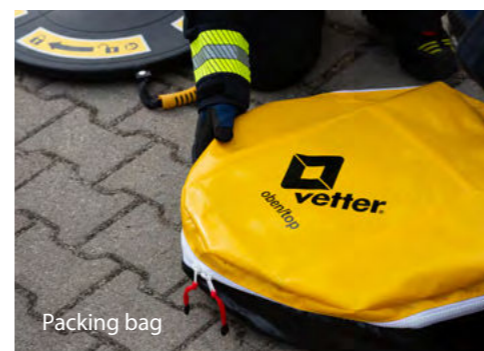
Test pressure: 18 bar (261 psi)

Burst pressure, at least: 48 bar (696 psi)

Combinations – up to 14 possible combinations

	max lifting height in cm**	max lifting height in inch**	A	B	C	D	E	F	G	H	I	J	K	L	M	N
C-TEC 30	27,5	10,8	1	2	3				1	1	1		1		1	
C-TEC 75	43,5	17,1				1	2	3	1	2		1		1	1	
C-TEC 172	69	27,2									1	1	2	2	1	3
Connection plug (new)	0	0	1	2			1	2		1						2
Connection plate (old)	1,5	0,6											1	1		2
Adapter (new to old)	3,0	1,2									1	1	1	1	1	
Total height in cm***			27,5	55,0	82,5	43,5	87,0	130,5	71,0	114,5	99,5	115,5	170,0	186,0	143,0	210,0
Total height in inch***			10,8	21,7	32,5	17,1	34,3	51,4	28,0	45,1	39,2	45,5	66,9	73,2	56,3	82,7

*Subject to change without notice | **without load | ***without protection cap



More info,
Videos & Extras



Vetter GmbH

Blatzheimer Str. 10-12
53909 Zülpich
Germany

Sales

Tel: +49 (0) 22 52 / 30 08-0

Fax: +49 (0) 22 52 / 30 08-590

Mail: vetter.info@idexcorp.com

vetter.de

© Copyright | 04-2023 | Vetter GmbH | Changes and errors excepted.

IDEX
FIRE & SAFETY