

R 420 | R 422 | R 424

**COMPACT AND
EXTREMELY STRONG.**



Scan this QR code
for further information.



▶ 2-stage telescopic rams

Rely on the strong rescue rams with a lifting force of up to 27 t. With the two-stage telescopic rescue rams, you can lift and push material out of the way which is impeding your rescue. The most powerful argument for its use is its enormous lift combined with its minimum size. They are simply indispensable when rescuing from vehicles, for accidents on railways or ships or after building collapses or natural disasters.

▶ Advantages

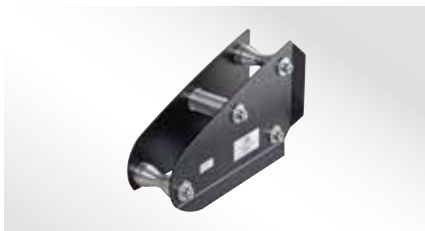
- + Rescue quickly and easily as two telescopic rescue rams replace three standard rams
- + High grip claws on the piston rod and in the base of the cylinder provide a good hold on sloping and smooth surfaces
- + Claws can be rotated 360°



▶ In use



▶ Accessories



Patented ram support
LRS 120



Patented ram support
LRS-C



Ram attachment set for rescue rams,
to increase variety of applications

▶ Technical data	R 420	R 422	R 424
Total stroke	22.6 in./575 mm	27.8 in./705 mm	34.5 in./875 mm
Stroke/lifting force, piston 1	11.6 in./59,800 lbs/ 295 mm/266 kN	15.7 in./59,800 lbs/ 365 mm/266 kN	17.5 in./59,800 lbs/ 445 mm/266 kN
Stroke/lifting force, piston 2	11 in./29,900 lbs/ 280 mm/133 kN	14.8 in./29,900 lbs/ 340 mm/133 kN	16.9 in./29,900 lbs/ 430 mm/133 kN
Extended length	41.2 in./1055 mm	50.8 in./1255 mm	59.1 in./1500 mm
Oil requirement	86 cu. in./1410 cm ³	106 cu. in./1735 cm ³	130.5 cu. in./2139 cm ³
Dimensions: l × w × h	18.8 × 4.4 × 8.7 in./ 480 × 112 × 221 mm	21.7 × 4.4 × 8.7 in./ 550 × 112 × 221 mm	24.6 × 4.4 × 8.7 in./ 625 × 112 × 221 mm
Weight	37 lbs/16.8 kg	41.4 lbs/18.8 kg	46.3 lbs/21.0 kg
Certification	EN 13204; NFPA 1936	EN 13204; NFPA 1936	EN 13204; NFPA 1936