



R 410 | R 412 | R 414



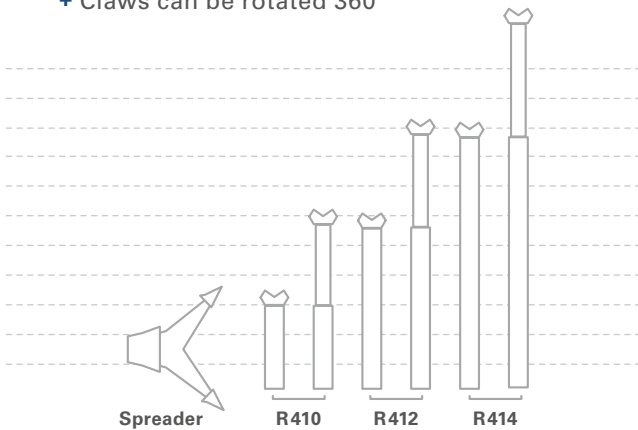
THE STANDARD RESCUE RAMS.



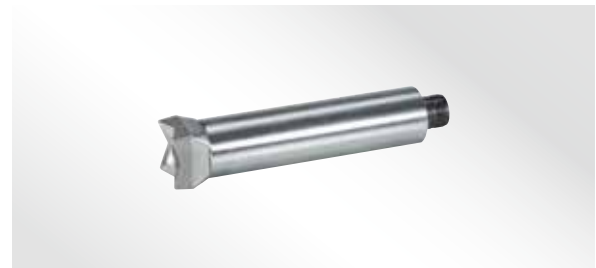
The range of single-stage hydraulic rams is carefully matched in size and extended length so that there are no gaps. Each ram creates an opening into which the next largest ram can be inserted.

Advantages

- + Minimal size for comparatively large lift
- + Claws can be rotated 360°



Accessories



Extension 10 in./250 mm for R 410

Ram attachment set for rescue rams,
to increase variety of applications
Patented ram support LRS-C
Patented ram support LRS 120

Rescue rams

Technical data	R 410	R 412	R 414
Piston stroke	12 in./300 mm	20 in./500 mm	27.6 in./700 mm
Lifting force	30,350 lbs/135 kN	30,350 lbs/135 kN	27,430 lbs/122 kN
Retracted length	18 in./450 mm	26.5 in./680 mm	35.4 in./900 mm
Extended length	30 in./750 mm	46.5 in./1180 mm	63 in./1600 mm
Oil requirement	29.1 cu. in./477 cm ³	48.5 cu. in./795 cm ³	67.9 cu. in./1113 cm ³
Dimensions w x h	3.4 x 6.9 in./86 x 174 mm	3.4 x 6.9 in./86 x 174 mm	3.4 x 6.9 in./86 x 174 mm
Weight	28.7 lbs/13.0 kg	39 lbs/17.7 kg	53.4 lbs/24.2 kg
Certification	EN 13204; NFPA 1936	EN 13204; NFPA 1936	EN 13204; NFPA 1936