

S 510

**THE ESTABLISHED
ALL-ROUNDER.**



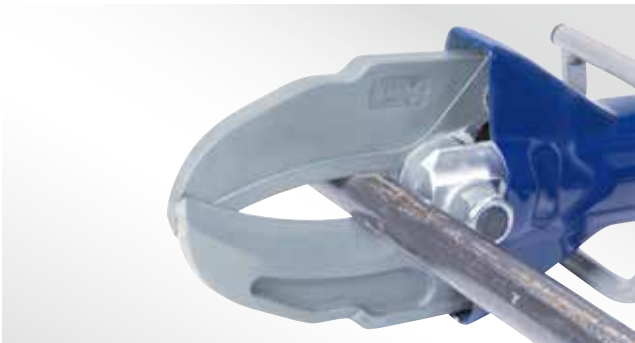
▶ S 510

With the S 510 you can cut current vehicle-sections very reliable. It has a very well-balanced relationship between long cut, optimal pull effect, force and weight. Numerous firebrigades around the world already value this fully developed cutter in practice.

▶ Advantages

- + Long blades with optimum pull-in effect
- + high cutting performance
- + highest reliability in use
- + robust blades with a long service life

▶ In use



▶ Technical data	S 510
Cutting force up to*	216,276.9 lbs/962 kN
Round steel up to diameter**	1.5 in./39 mm
Blade opening	7.9 in./202 mm
Oil requirement	9.2 cu. in./150 cm ³
Dimensions: l x w x h	30.6 x 9.4 x 6.7 in./776 x 240 x 170 mm
Weight	41.7 lbs/18.9kg
NFPA-Classes	A8/B9/C7/D8/E9
EN-Classification	CC 202 H-19

*theoretic ** according to EN 13204;NFPA 1936