

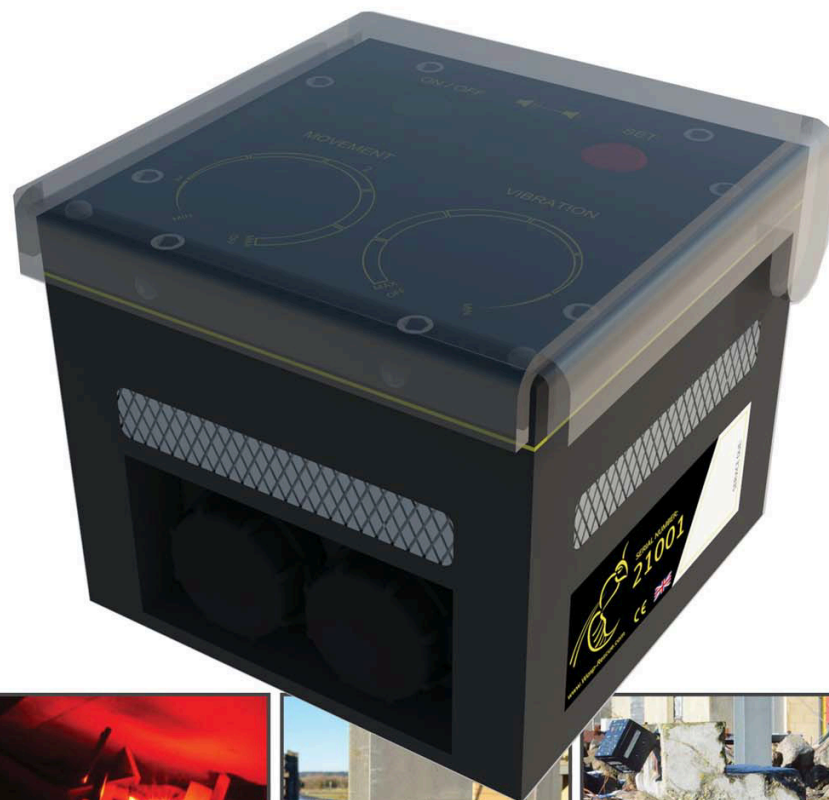


SUPPLIED BY:



P: +61 3 9562 8800

E: rescue@pthydraulics.com.au



WARNING ALARM FOR STABILITY PROTECTION

WWW.WASP-RESCUE.COM



PRODUCT

IN SERVICE

WASP

Warning Alarm for Stability Protection

IS YOUR EMERGENCY SAFE?

Monitor the danger
and reduce the risk

WASP is an innovative but simple monitoring system suitable for many emergency applications. Attached to any surface and in any position **WASP** provides an early warning of movement and vibration that may present danger to rescue crews, as well as members of the public.

WASP was conceived by Matt Keogh, an experienced fire-fighter with Greater Manchester Fire and Rescue Service in the United Kingdom. Matt has been called upon to attend the scene at thousands of emergencies across the UK and has been deployed across the globe as an international Search and Rescue specialist on countless USAR missions.

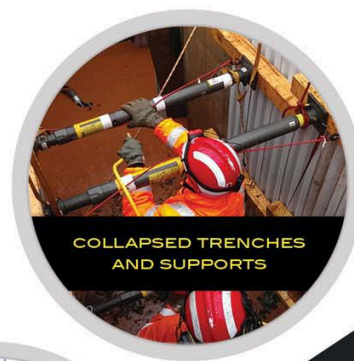
The **DATUM** Group, UK-based structural monitoring specialists, teamed up with Matt to design and manufacture **WASP** to meet his rigorous and precise technical specifications for use in the harshest of rescue environments.

Created to detect even the slightest movements and vibration, **WASP** was developed for use in collapsing buildings and structures, to be installed on supporting props and struts and to detect a wide range of structural and mechanical failure and disturbances. This ensures that rescue missions are carried out safely, effectively and without unnecessary risk.

'Attending an emergency often requires fire-fighters to be put into very hazardous environments, I identified a need for a rapidly deployable system to provide advanced warning of danger from collapsing walls and floors, shoring or prop failure and unstable vehicles and plant. I believe this equipment will elevate the safety of rescue crews from possibly life-threatening situations.'

Matt Keogh,

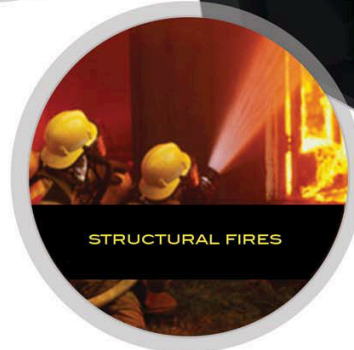
Fire Fighter, Greater Manchester Fire and Rescue Service.



COLLAPSED TRENCHES
AND SUPPORTS



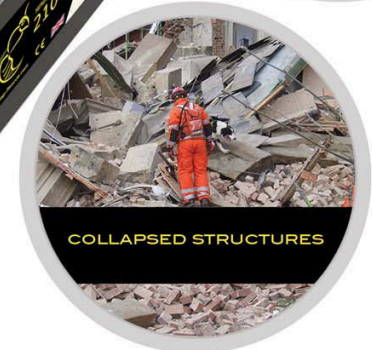
ROAD TRAFFIC ACCIDENTS



STRUCTURAL FIRES



CRITICAL EMERGENCIES

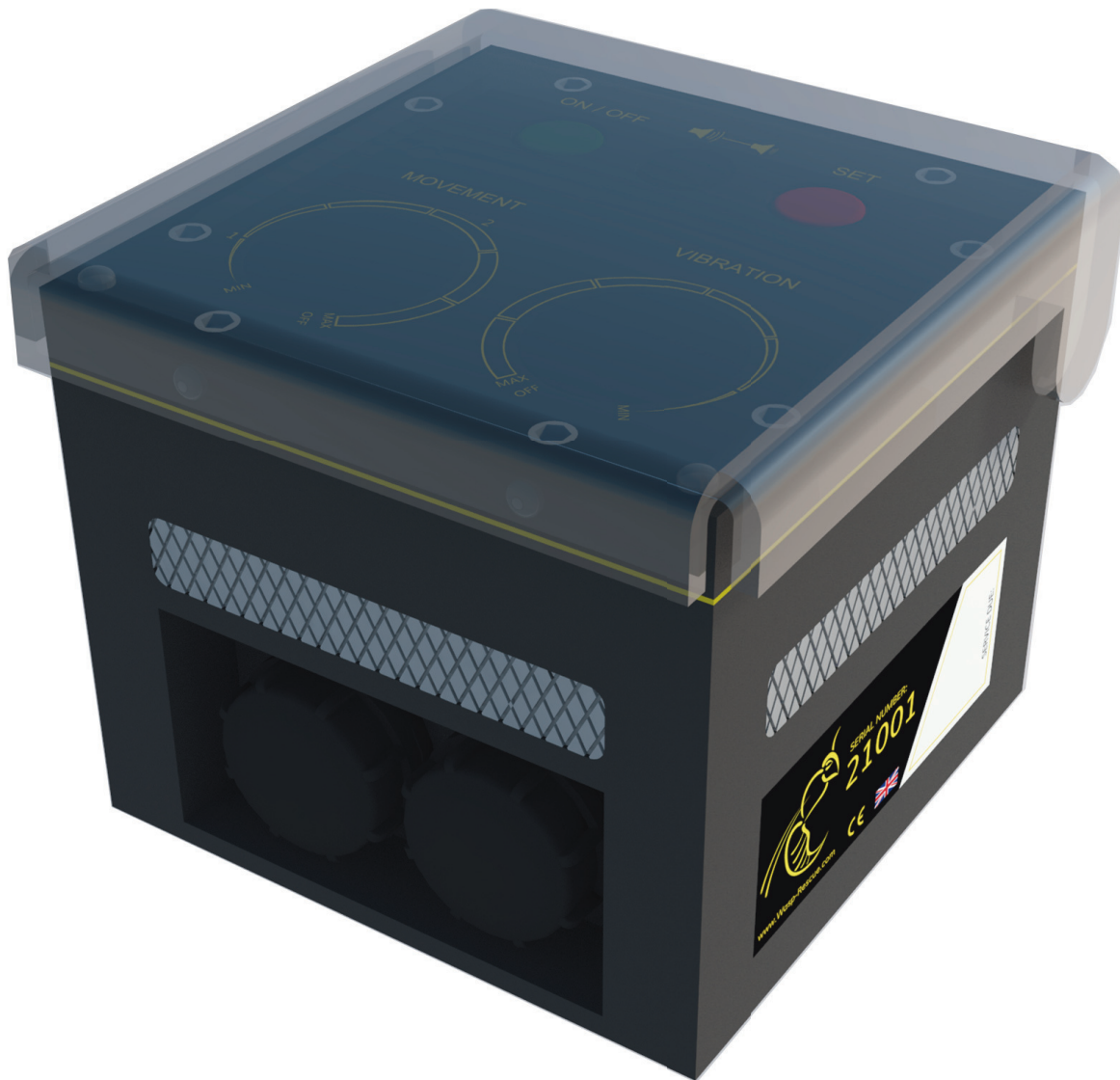


COLLAPSED STRUCTURES



P: +61 3 9562 8800

E: rescue@pthydraulics.com.au



www.wasp-rescue.com

Warning Alarm for Stability Protection



FEATURES AND BENEFITS

- Portable and light weight with rapid deployment
- User programmable SMART functions
- Configurable alarm settings
- Hardwearing acrylic gel composite body
- Magnetic base for rapid site deployment
- Audio and visual alarms for any scenario
- Simple standardised operating procedure
- Applicable to a wide range of emergency scenarios



SPECIFICATION

Sample Frequency	100hz
Measurement Range	360 Degrees in 3 directions (3 degree movement range in operation)
Resolution	+/-0.01mm
Accuracy	+/-0.1mm
Power Requirements	4 x 1.5V C Cell Batteries
Dimensions	
Height	140mm
Depth	150mm
Width	170mm
Total Weight with Batteries	3.15kg
Materials	
Body	Acrylic Gel
Lid	Plastic
Magnetic Contact Pad	Galvanised Steel and Rubber
Operational Battery Capacity	Continuous use - 1 week
Magnetic Contact Pad	
Pull Force	40kg
Shear Force	25kg
Controls	
Movement	Dial setting 1-10 (+/- 3 degrees)
Vibration	Dial setting 0.1-1 (0.5hz to 100hz)
Power	On/Off
Set	Arm/Disarm
Volume	Off/High
Alarms	
Audible	Siren (adjustable)
Visual	8x Red LED Strobes
Water/Dust Proof	IP 55