

PRODUCT OVERVIEW - 2015 -



Committed to continual improvement in everything we do

LUKAS

Because you never get a second chance

In 1972 Lukas manufactured the first hydraulic cutter for rescue work, since then Lukas have continued to offer market leading solutions for all rescue scenarios.

Heavy Duty Rescue Kit



Equipped for the most difficult rescue situations

- S700 High Performance Cutter
- SP 510 Large Spreader
- KSS 20 Set of Chains
- R420 Telescopic Rescue Ram
- R242 Telescopic Rescue Ram
- High performance P650 Simo including DHR20 dual hose reel
- Choice between petrol or electric motor



Light Rescue Kit



The perfect Rescue Kit for teams who need compact equipment to assist in traffic accidents

- S311 Cutter
- SP 300 Spreader
- P620 SG Motor Pump
- R420 Telescopic Rescue Ram
- Choice between petrol or electric motor



Next Generation Rescue Tools

eDRAULIC 2.0

NO power units, NO hoses, NO couplings

- Lukas eDraulic Technology removes all pumps and hoses from your rescue kit
- All tools are fully self contained
- Immediately ready to use as soon as you arrive at an accident
- Any number of tools can be used concurrently

Optimised for Vehicle Extrication

- The eDraulic tools incorporate new design concepts for optimised performance during vehicle extrication
- Achieve insertion into the narrowest gap for faster and safer rescues

Fail Safe Power Management

- Each battery in a Lukas eDraulic tool will last for approximately 60 minutes
- Recharge time for battery from empty to 90% full is 60 minutes
- Batteries can be used in any eDraulic tool and hold their charge if not used
- Tools can be directly powered from 115V-230V outlet

Weight & Space Savings

- A full set (Cutter, Spreader, 2 Rams) of eDraulic tools weighs almost 50% less than the equivalent set of conventional tools
- No pumps nor hoses allows for huge space savings

Suitable for use in any environment

- Able to be used where petrol pumps are not permitted
- Movement to scene of accident made easier



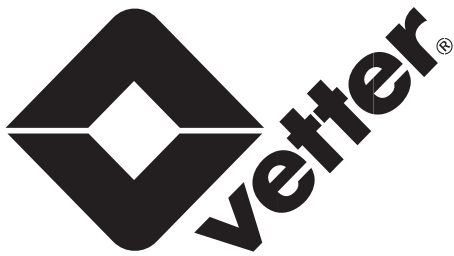
LUKAS

eDRAULIC 2.0



In 2010 Lukas introduced their range of eDRAULIC Rescue Tools. After four years of service and experience, LUKAS released the 2nd Generation eDRAULIC 2.0 Rescue Tools incorporating increased performance with weight savings.

THE BEST JUST GOT BETTER



Decades of consultation with active-duty emergency personnel have given Vetter the rescue experience needed to develop the next generation of rescue technology

Rescue Bags



The right bag for every situation

- Operate at 8bar (116psi) pressure
- Insertion height from 2.5cm
- Noiseless & jerk-free operation
- Lift, push, pressurise, mortise or split heavy loads
- Available in steelcord or aramid construction

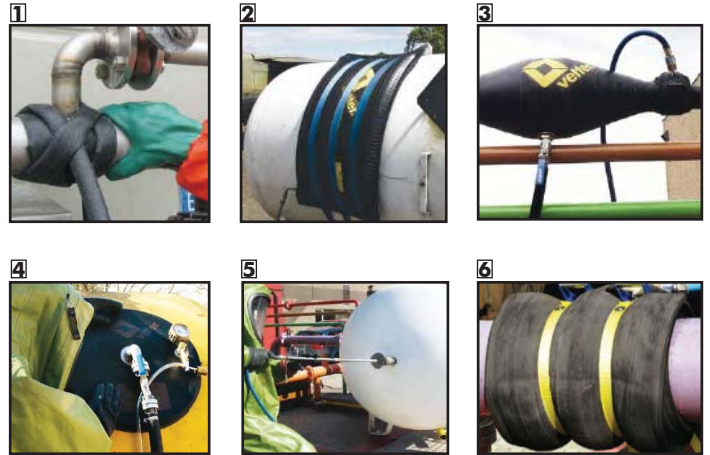
Low Pres. Lifting Bags



Clever design for more safety

- Operate from 0.1 to 1 bar using a variable controller
- Highly flexible with high quality aramid side walls
- 4:1 burst rating
- Used worldwide for over 40 years

Leak Sealing



High Pressure Leak Sealing Systems

Sealing hoses (1)

- Universally applicable
- Withstands counter-pressures up to a maximum of 9 bar

Sealing Bags (2)

- Sealing pressure concentrated on sealing area
- Low air requirement

Flange Drainage Bags (3)

- Reliable sealing and controlled diversion
- Gas and liquid proof zip

Vacuum Leak Drainage Bags (4)

- Belt fixing not required
- Stainless steel connections

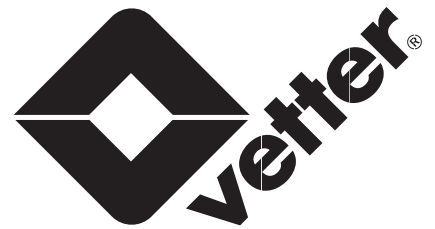
Leak Sealing Lance (5)

- Anti-slip profile of bag ensures quick sealing
- Increased safety for personnel due to 140cm lance

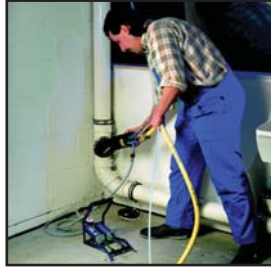
Leak Sealing Bandages (6)

- Seals longitudinal leaks in pipes quickly and safely
- Anti-static and self-extinguishing characteristics

Vetter's rescue products provide maximum functionality for all deployment scenarios, even under the most extreme conditions



Pipe Sealing



Protecting you and the Environment

Universal Sealing Bags

- Easily and quickly positioned
- Can be used as a sealing bag for pipes of 10cm-30cm
- Increased user safety due to integrated inflation hose

Compact Sealing Bags

- Inflation fitting can be decoupled enabling any number of bags to be used
- Unit contains safety valve and manometer

Water Tanks



Tanks for valuable or dangerous material

- Closed and open tanks available
- Self-erecting
- Manufactured from strong resistive PVC
- No additional support necessary (open tank)
- Fitted with a high quality PVC ball valve
- Optional handles and covers available
- Temperature resistance range from -30 to +70 celcius

Medical Tents



Single Tent or Field Hospital

- Modular design allows unlimited configurations
- Quick and simple erection
- Securing roof net enables lighting and medical equipment to be attached

Universal Tents



The tent for every application

- Developed specifically for fire services
- Self erecting suport frame
- Compact and low weight for easy handling

Decontamination Tents

Quick and reliable decontamination



- Usable inside or out
- Abrasion protection on base of unit
- 8 moveable shower heads positioned at different heights

STABFAST™



The Universal Stabilisation System

- Can be used on all types of passenger vehicles, MPV's, vans and trucks, whatever the crash scenario
- Compact with minimal components
- Stabilisation achieved quickly and safely
- Ensures safety to crash victims and emergency personnel

Packexe®

SMASH & SHARPSWRAP



SMASH



SHARPSWRAP

Time Critical Glass Management

Packexe SMASH & SHARPS WRAP

- Self adhesive film secures glass and sharp edges for fast and safe vehicle extrication
- Protects rescue team and casualties by holding glass in place and protection against sharp edges
- Can be used to strengthen glass, reducing the risk of breakage by approx 42%

Also available -

PT Rescue Glass Management Kit

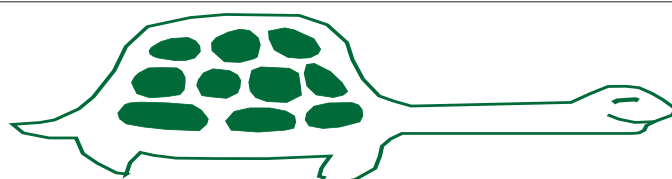
- Kit holds all necessary glass management items in an easy stow carry bag



Stabilisation, Rescue, Support

Suitable for -

- Confined Space & Rope Rescue operations
- Heavy Lift operations
- Trench Rescue
- Vehicle Stabilisation
- High Strength Column
- Vertical Shoring



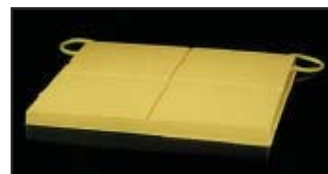
TURTLE PLASTICS



Superior Stability & Non-Absorbing

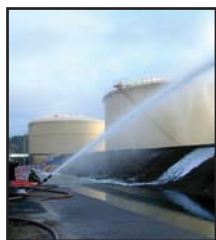
Turtle Plastics offer a range of

- Rescue Chocks
- Blocks
- Lincoln Log Cribbing
- Wedges
- Emergency Cribbing
- Bag Pads
- USAR & Standard Kits
- Hose Bridges





Bio-Ex specialises in the design and manufacture of environmentally friendly chemical products suitable to fight all types of fire



Environmentally Friendly Fire Foams

- Glycol & Fluoro Free - Environmentally Friendly
- Fire fighting foams for oil fires
- Multipurpose foams for chemical and solvent fires
- High expansion foams for warehouse fires
- Pre-mixable foams for sprinkler systems
- Additives for forest, land, urban and industrial fires
- Foam to neutralise hazardous compounds and toxic vapours



Foam Proportioning Systems

- Suitable for all foam class types, wet additives and long term retardants
- Highly accurate, reliable, efficient and safe
- Suitable for civil, industrial and military fire fighters
- Direct injection eliminates risk of pressure drop
- Simple user interface



Compressed Air Foam System

- Light weight, ergonomic design high pressure gun
- Compressed air is generated by gun itself hence no compressor nor compressed air bottles are required
- No moving or rotating parts on the gun
- Minimal re-coil
- Continuous or jet spray setting



Pumps for harsh conditions

- Submersible pumps
- Submersible Sewage Pumps
- All purpose pumps
- X-Proof Transfer Pumps
- X-Proof Transfer Pumps for dangerous fluids
- Work in both horizontal and vertical positions



Oxy-Petrol Cutting Systems

- Complete cutting systems for heavy rescue, search & rescue and industrial applications
- No risk of backflash up fuel line
- Performs cuts that no acetylene or propane cutters can achieve
- Unlike acetylene and propane systems, the cutting tips never clog

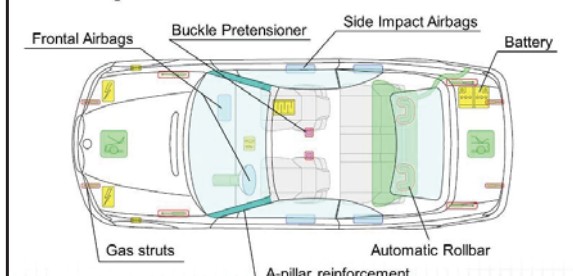
CRASH Recovery System®



Mobile Vehicle Information Database

- Vehicle database showing potential hazards to rescue workers when dismantling a vehicle i.e., airbags, power sources, fuel tanks, seat belt pretensioners etc
- Shows location, specification and deactivation method of potential hazards
- Runs on all laptops, tablets and PC's
- Software updates available as new vehicles enter the market

Computer Aided Extrication



Rescue Gloves



Specailly designed for Road Crash Rescue

- Made from Kevlar and Cordura material for superior strength
- Padded knuckle support for extra protection
- Extra long fitted cuff to protect from debris
- Excellent dexterity and protection
- Available sizes: S - XXL

LEADER®

Rescue Helmets

HIGH-VISIBILITY

Vent covers
standard photoluminescent pair of vent covers.



Reflective Tape
Complies with SOLAS approvals. This makes the helmet far more visible at various angles than standard helmets. Six strips of SOLAS tape are fitted to each helmet.

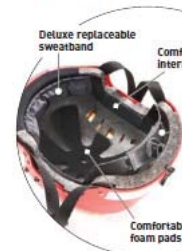
Colours available



SECURITY & COMFORT



Easy attachment of accessories, including headsets and ear defenders



Retractable internal eyeshield

Meets the EN166:2002 standard for industrial eye protection. Clear eyeshield for eye protection in any light conditions.

Options:

• Amber:



Reduces the haze of the blue light spectrum of sunlight. It sharpens the image, some small true colour distortion can occur.

• Smoked:



Reduces the brightness of the sunlight, without too much colour prejudice.

All-Risk Helmets

- High performance helmet with facility to fit a variety of accessories
- High level of top and side impact protection
- Fitted with retractable internal eyeshield
- 2 year warranty



Pow'Air Ventilators



Designed with Operator Safety in mind

- Electric, water or petrol driven
- Total effectiveness between 2-6 metres
- Low noise level
- Can be used as a high expansion foam generator or a mister offering faster and more effective cooling



Sentry Monitor



Structural Movement Detection

- Alerts rescuer to imminent danger from structural collapse or movement
- Sounds a piercing 98dB alarm to warn of movement and aid early evacuation
- Can detect movement accurately from a distance of 30m
- Designed and manufactured along side Search & Rescue teams



Audio ResQ



Detects signs of life in extreme conditions

- Wireless high performance location equipment
- Up to 6 seismic sensors enables a surface coverage of approx 50m width
- Waterproof to IP67 standard
- Re-chargable battery pack - standard running time of 8 hours



Visio Search



Precise Visual Victim Location

- High definition picture with 2 x zoom
- Durable scratch resistant sapphire lens
- Camera head mounted on flexible shock absorbing coupling
- Water resistant camera head
- 260 degree of vision
- Directional orientation of camera displayed on screen

LEADER's Research and Development team work hand-in-hand with emergency services, industries and laboratories who are dedicated to designing and developing tomorrows leading products



Portable Lighting & Power

- Maintenance free Lithium-Ion rechargeable battery
- High performance Cree LED's 50,000 hours life
- Detachable Telescopic Floodlight
- High powered Spot beam with peripheral light
- High Impact Polyurethane casing
- Shatterproof Polycarbonate lenses



Water, Crush and Dust Proof Cases

- Ideal for storing Lukas e-draulic tools
- Four extra-deep base-to-lid locking cleats that ensure maximum stacking stability
- Wide track polyurethane wheels with ball bearings and nylon hubs
- Stainless steel hardware and padlock protectors
- Open cell core with polumer wall construction
- Lifetime Guarentee of Excellence



Hooligan Tool

- Tool heads are forged from high alloy steel and heat treated for maximum strength
- Heads are attached to stress proof, lightweight bar with slip resistant grip



Powerful Cordless Tools

- 29mm stroke length, 3000 SPM for extremely fast cutting
- Heavy duty, all metal blade
- High/Low speed selector switch with variable speed trigger

TurboDraft™ Fire Eductor

- Available in 2.5" & 5" models
- Generates high fire flow rates from static water
- Dewatering and flood mitigation
 - Salvage and Overhaul
 - Ships and Watercraft
 - Basement flooding
- Bush fire fighting operations
- Refilling of operational appliances



Rescue Accessories

Air Bag Safes

- Protects both driver and passenger from late-deploying air bags
- Provides maximum protection during rescue operations and can be fitted quickly



Protection Covers

- Protects Rescuers from sharp edges such as cut vehicle columns
- Securely fixed by velcro straps and sewn-in magnets



Ram Supports

- Provides superior stability
- Non-slip design
- Can be manually adjusted to fit any vehicle type



- Also available from PT Hydraulics Australia -



DID YOU KNOW WE HIRE OUR PRODUCT RANGE?
- Contact PT HIRE for all your Rescue & Industrial Equipment Hire needs -
P: + 61 3 9562 8800 E: hire@pthydraulics.com.au

POWER TEAM

HYDRAULIC TOOLS & EQUIPMENT



- Hydraulic Cylinders
- Hydraulic Pumps - Elec, Air, Hand
- Shop Equipment
- Synchronised Lift Systems
- Hydraulic Jacks
- Hydraulic & Mechanical Tools
- Bearing Maintenance
- Hydraulics Accessories

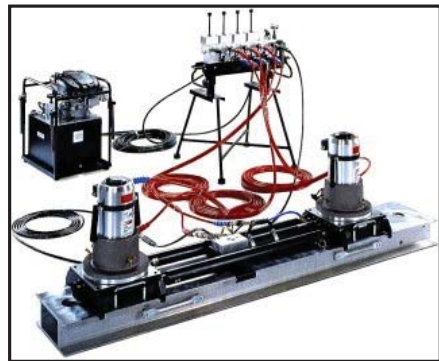
STONE GLOBE

HYDRAULIC SOLUTIONS

AIR MOTORS



- AC & DC Power Units
- Remote Power Units
- Vane and Piston Air Motors
- Assemble To Order (ATO) Power Units



- LUKAS Re-Railing Equipment
- SPX Rail Systems
- Stanley Track Jacks
- Hywema Lifting Equipment
- GRAW Laser Systems
- Geatech Railway Machinery



- High Pressure Pumps (1380 Bar)
- Special Fluid Pumps
- Split Flow Pumps
- Directional Control Valves
- Pressure Control Valves

PT Hydraulics Australia - Committed to providing quality products and superior service to ensure our customers needs are not only met but exceeded



PT Rescue Profile

"The key to PT Rescue's ongoing success is our commitment to quality products and superior service. Our qualified staff have the ability to offer a complete range of service to all our customers tailored to their individual needs. Our PT Rescue Complete Customer Care Package is the foundation on which we build lasting partnerships with all our customers."

Key Services Offered -

- Trade-in option on your existing equipment
- Ex-demonstration equipment available
- In excess of \$1.5M in rescue stock
- \$250K spare parts holding
- \$400K loan and demonstration equipment made available to all service for competitions, trade events and ongoing training
- 24 hour back up and after sales service
- Leasing and hire options tailored to suit your requirements
- On-site servicing in most states and territories
- In-house servicing and regular maintenance
- Comprehensive training programs from beginner to advanced including -
 - Road Accident Rescue
 - HAZMAT and Decontamination
 - Environmental Spill Management
 - Technical Rescue Trenching and Shoring
 - Pneumatic Airbag Lifting
 - Aircraft Lifting
 - Train Re-Railing
- Qualifications -
 - Qualified Certificate IV Trainers and Assessors
 - ISO Certified
 - Fluid Power Specialists
 - RAR Accredited Trainers

PT Rescue can provide a one day handover of equipment that includes briefing on the equipment safety and current best practices with Lukas Rescue Systems; updates on new vehicle technology and rescue techniques; and preventative care servicing and maintenance.



PT Rescue

19 Ricketts Road
Mt Waverley, VIC, 3149

P: +61 3 9562 8800

F: +61 3 9562 8080

E: rescue@pthydraulics.com.au