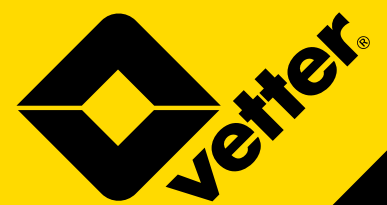


Emergency Pneumatics.



Medical tents

Product catalogue



Version: 05.2013



Contents

Introduction		
Because we understand you	Page	4
Medical tents		
MT-Series	Page	8
Tailored to individual requirements	Page	12
Mobile hospitals		
Mobile hospitals	Page	16
Decontamination		
Decon tent	Page	20
Decon showers	Page	24
Accessories		
Practical additions	Page	28
Vetter GmbH		
The all-round manufacturer for specialized emergency pneumatics	Page	38

Eight good reasons for pneumatic medical tents:

- Erected in two minutes with just two people
- Immediate operational readiness
- Versatile and mobile
- Hardly any training required
- Complete equipment contained in one pack
- Independent of power supply
- Long periods of use without having to re-fill
- One-piece system without any loose parts

Because we understand you.

Your operational goals are quickly and more easily achieved thanks to the speedy development of our products. Your time is of value and must not be wasted. You could say that a tent is a tent – no more and no less. However, another important aspect must come into the equation and that is the question about if it is going to live up to the mark with regard to performance, design and quality not to mention the other worry about it being able to automatically do what it is intended to do.

Completely oriented to operational application.

The specialists who are way ahead in the field of emergency pneumatics

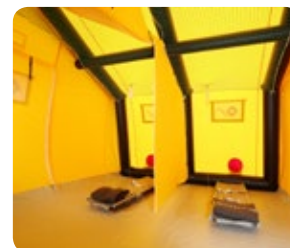
There is only one market provider worldwide that is able to offer you the full range of pneumatic products tailored to the field of rescue – that provider is **Vetter**. You gain from our many years of experience and from the very pinnacle of quality – Made in Germany, the hallmark you can rely on.

Life-proven rescue experience

From the very beginning in 1964 **Vetter** has developed itself to being a trustworthy and proficient partner for fire services and aid organizations in all aspects worldwide. With our vast experience we know what helpers and rescuers really need which is in turn optimally implemented into our products.

Paramount orientation to customer needs

It is a known fact that every individual sector of medical service has its own typical operational scenarios and requirements with respect to a rescue tent. With **Vetter** you are always on the safe side because we offer you tents made meticulously by hand thus giving you open opportunities to implement your very own design. Our sales network and production work as one body in order to develop the most suitable solution, putting you in the best and most reliable position.



Well conceived tents for complete operational flexibility:



Removable velcro floor



Easy docking



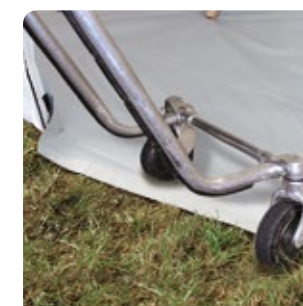
4-6 windows depending on the model



Individual marking and lettering



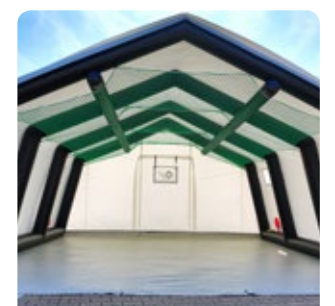
Securing net in the roof area



Obstacle-free floor



Super-stable support frame



Removable entry awnings



Medical tents

Special developed with the medical field in mind.

MT-Series

The standard tent for all scenarios.

If you are looking for versatility, top quality and many well-thought-out features giving you operational ease then look no further because Vetter's MT Series offers all these factors in one package. The practical width of 5.50 m is of great advantage when beds are positioned crosswise because this means that there is a gangway of 1.5 m available for medical staff and equipment.

Four sizes and one docking tent

You can choose between one of four different sizes which offer useable areas from 20 m² to 60 m². The docking tent will enable you to construct a "tent town" or join individual tents to each other. This field-proven feature is of great advantage when working on the front line in rescue operations.

The vital aspect of saving time and staff

Saving time and staff is certainly a vital aspect and this is why **Vetter** designs tents which are practical to transport as well as being swift to erect and dismount. Such things as self-erecting support frames, lightweight features, compact dimensions and practical handling all contribute to



Product drawings



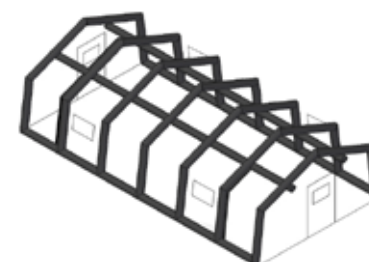
MT 20



MT 30



MT 40



MT 60



Docking tent



In operation for...

- › First aid tent at large events
- › Operation control centre for aid organizations
- › Medical care tent for large-scale operations
- › Storage tent
- › Screening facility for treatment of injuries
- › Accommodation tent
- › Emergency accommodation during evacuations



Good reasons:

- › The most extensive and far-reaching standard package on the market
- › Specially developed with the medical sector in mind
- › Erected in just 2 minutes (MT 20)
- › Remains fully operational for a number of days without needing any re-inflation
- › Easy tent docking with velcro fasteners
- › Patented securing net in the roof area which enables flexibility for attachment of medical equipment or lamps
- › Individual marking either on a separate cover or directly onto the tent awning
- › Unlimited docking of additional tents



Guaranteed quality:

- › Final inspection of all tents and accessories
- › Testing to 1.3 times the operating pressure
- › A safety valve (0.3 bar) integrated into the support frame protects against over-inflation
- › The support frame is made of a special tear-proof material
- › Awning material made of the very best quality which was specially designed for tents
- › Low flammable awning PU-material meeting DIN 4102 B1





Type		MT 20	MT 30	MT 40	MT 60	Docking tent
Cat. no. PREMIUM set with PVC tent tarpaulin		1523011901	1523012401	1523000702	1523012901	1523015601
Cat. no. BASIC set with PVC tent tarpaulin		1523019501	1523019801	1523020101	1523020401	-
Cat. no. PREMIUM set with PU tent tarpaulin		1523027400	1523027500	1523027600	1523027700	1523027800
Cat. no. BASIC set with PU tent tarpaulin		1523027900	1523028000	1523028100	1523028200	-
Usable Area	m ²	20	30	40	60	45
	sq.ft.	216	324	432	648	462
Number of possible beds		6	8	12	18	-
Erection time, ca.	sec.	120	180	240	360	300
Exterior size (L x W x H)	cm	370 x 593 x 324	550 x 593 x 324	730 x 593 x 324	1100 x 593 x 324	660 x 660 x 324*
	ft	12 x 19 x 11	18 x 19 x 11	24 x 19 x 11	36 x 19 x 11	21.5 x 21.5 x 11
Interior size (L x W x H)	cm	370 x 534 x 294	550 x 534 x 294	730 x 534 x 294	1100 x 534 x 294	660 x 660 x 294
	ft	12 x 18 x 10	18 x 18 x 10	24 x 18 x 10	36 x 18 x 10	21.5 x 21.5 x 10
Air requirement	l	3052	4566	5851	8113	4567
	cu.ft.	108	161	207	287	161
Pack size (including bag)**	cm	110 x 85 x 60	110 x 85 x 60	110 x 85 x 85	110 x 95 x 100	110 x 85 x 85
	inch	43 x 33 x 24	43 x 33 x 24	43 x 33 x 33	43 x 37 x 39	43 x 33 x 33
Weight***, ca.	kg	72	108	112	174	135
	lbs	159	238	247	384	298

All rights reserved for technical changes

*Height of roof ridge = 390 cm/12.5 ft
 **Smaller pack size (with packing blanket) on request, e.g. for vehicle loading
 ***Average weight depends on the material of the set combination

PREMIUM set basic equipment in detail:

- › Tent frame including the guy cable
- › Wrapper tarpaulin with separate, removable entrance tarpaulins
- › 2 independent/different connection facilities available
- › Patented attachment net in the roof area (removable)
- › Sufficient number of windows extant (See Drawings p. 9)
- › Removable tent floor (barrier free)
- › 4 feed-through holes, 2 on each tent side

BASIC set basic equipment in detail:

- › Tent frame including the guy cable
- › Wrapper tarpauling with separate, removable entrance tarpaulins
- › 2 independent/different connection facilities available
- › Removable tent floor (barrier free)
- › 2 feed-through holes, 1 on each tent side (diagonal)

Each tent is supplied with a bag including accessories (hammer, pegs and repair material).
 The complete equipment is delivered in a practical package (portable).

The standard colours:



You want another colour?
 That is no difficulty, just ask!

Tailoring to your requirements

Your requirements fully met individually and quickly.

Complete freedom of design for individual tents - this is a feature offered to you only by Vetter. If you are looking for a tent which is able to fulfill your application requirements and think that a standard tent does not come up to the mark then you are directly on target with Vetter. We are able to design any form of tent tailored to your requirements.

Your customized tent

At **Vetter** there is a great deal of work made by hand. This is the reason why we are able to guarantee accuracy and paramount quality even with individual series. Take advantage of our considerable working experience ranging over many years in the field of emergency pneumatics in order that the perfect tent concept becomes reality for you.

Your variation possibilities are unlimited:

- › Transverse and longitudinal separation walls in any combination
- › Addition of ducts in the awnings for cables or heating
- › Ventilation covers
- › Marking and lettering according to requirements
- › Special colours outside the colour range (refer to Page 10)
- › Various colours are also combinable
- › Individual number of windows
- › Window with mesh net or additionally fitted with polyglass
- › Free choice of shape and number of doors
- › Type and method of docking (directly or with a sluice)
- › Removable floor (only inside) or completely detachable
- › Version with an insulation awning and / or inside tent

The variations listed only represent a fraction of the possibilities available.

Is there nothing which seems to meet your needs?

The answer can never be "no" because we can make it possible, just ask us - it is worth it!

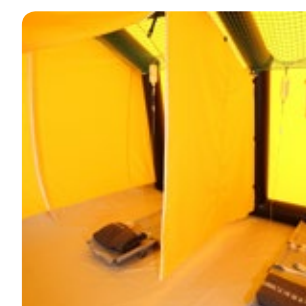
Our staff will gladly assist you in all matters concerning products, detailed information and answers to any of your questions, just contact us:

**+49 (0) 22 52 / 30 08-60 or
vetter.info@idexcorp.com**

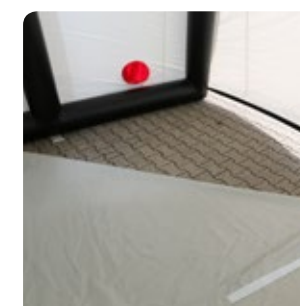
www.vetter.de



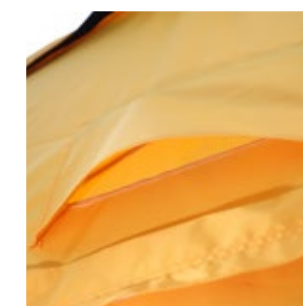
Unlimited variation possibilities:



Transverse and longitudinal walls



Detachable flooring



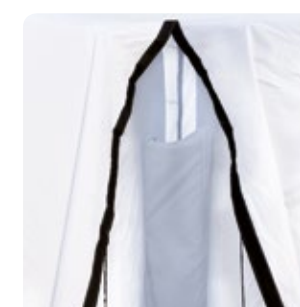
Ventilation flaps



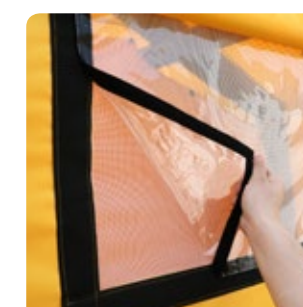
Individual marking and lettering



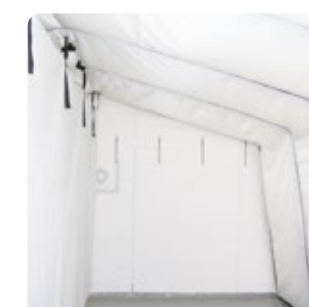
Individual colours / multi-coloured tents



Type and method of docking



Window with mesh net / polyglass



Insulation covers



Mobile hospitals

The hospital that comes to the patient.

Mobile hospitals

Equipped for readiness.

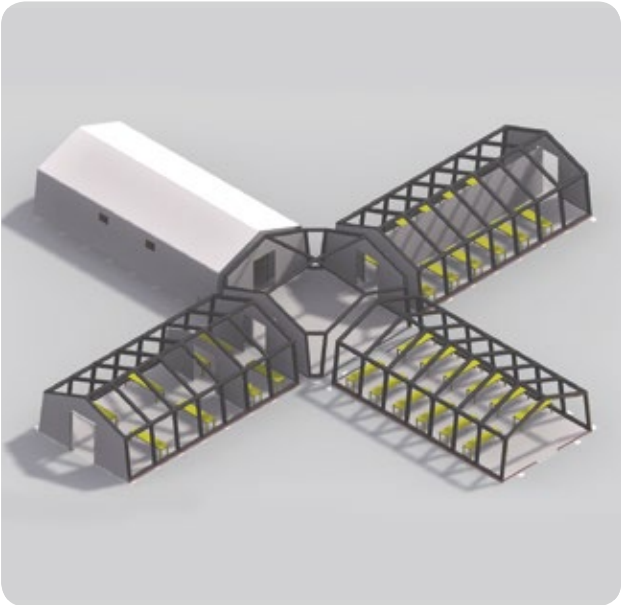
Thanks to design foresight, our medical tents are modular and therefore excellently suited for constructing tent groups or mobile medical care centers. Features such as detachable floors, which are obstacle-free, or removable entry awnings give you the required flexibility in order to meet all demands.

Unlimited combination possibilities

Using the MT-series as a basis enables you to couple any number of tents to make a "tent town" depending on the scenario to be overcome. Docking tents, sluices or just removal of the entry awnings help you to construct large protected areas. If decontamination of large numbers of people is required then this does not present any difficulty because decontamination tents and showers are easily integrated.

Example scenario (number of patients: 120)	
Equipment	Required number
Tent type MT 60 (60 m²)	10 (600 m² useable area)
Number of docking tents	3
Number of beds	120
Lamps per MT 60	4
Heaters per MT 60	1

We will gladly send you a quotation tailored to your scenario.
Contact us under:
**+49 (0) 22 52 / 30 08-60 or
vetter.info@idexcorp.com**
www.vetter.de



In operation for...

- › Large scale damage with a Mass Casualty Incident (MCI)
- › Earthquake
- › Storms / Flooding
- › Forest fires
- › Acts of terrorism (ABC protection measures)
- › Threats caused by war
- › Decontamination with epidemics (a mobile hospital constructed in front of the main hospital, in connection with decontamination tents, refer to Page 20)
- › Large scale accident
- › Explosions in industrial facilities



Good reasons:

- › Rapid erection and immediate use of the areas
- › Large useable width achieving sufficient free space in the tent
- › Securing net in the roof area enabling the attachment of lighting and medical equipment
- › Unlimited number of combination possibilities
- › Removable entry awnings guarantee more flexibility



Guaranteed quality:

- › Final inspection of all tents and accessories
- › Testing at 1.3 times the operating pressure
- › A safety valve (0.3 bar) integrated into the support frame for protection against over-inflation
- › The support frame is made of a special tear-proof material
- › Awnings material of the highest quality and designed especially for tents
- › Low flammable awning PU-material according to DIN 4102 B1





Decontamination

Quick and reliable protection of people.

Decon Tent PZ 17 2 L

Decontamination of civilians or deployment teams

With the PZ 17 2 L you can decontaminate both civilians as well as the deployed personnel. Thanks to a longitudinal partition, the tent is subdivided into 2 decontamination lines. These two lines provide sufficient room for men and women to shower separately.

The shower units divide the tent into undressing, showering and dressing areas. Since each shower unit has a separate water supply, the water volume and temperature can be individually controlled. Practical orientation during use is provided by the colour coding of the feed-through holes in the tent tarpaulin (blue: water, red: heating or electricity, green: compressed air). The continuous collecting basin in the shower area prevents fluid from transgressing into the rest of the tent. If required, easily connect the PZ 17 universal tent as an additional supply or accommodation tent with the PZ 17 2 L to expand the functional radius.



Decon Tent PZ 17 2 L comes standard with these components:

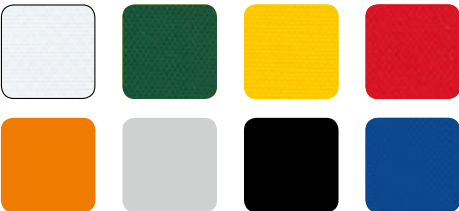
- › Inflatable tent frame including the guy cable
- › Removable tarpaulin with removable entrance tarpaulins
- › 4 doors (2 in each entrance tarpaulin)
- › 4 windows (2 in each entrance tarpaulin)
- › Removable tent floor
- › Removable longitudinal partition for subdividing the tent into the 2 lines
- › 2 shower units and shower hoses
- › Shower basin made of polyester fabric, PVC coated on both side (other qualities on request)
- › 4 shower handsets (2 handsets per shower unit)

Each tent comes with an accessories case including a hammer, earth pins and repair material. The whole equipment is supplied in a practical pack unit.

Technical Data

Decon Tent PZ 17 2 L	Erection time sec.	Size, exterior (L x W x H) m/ft	Size, interior (L x W x H) m/ft	Air requirement litres/cu.ft.	Stowing dimensions (L x W x H) m/ft	Weight ca. kg/lbs	Collecting basin, litres/cu.ft.
17 m ² , 2 lines 1520047000	120	4.9 x 3.86 x 2.48 16 x 13 x 8	4.9 x 3.5 x 2.3 16 x 12 x 8	2664 94	1.1 x 0.85 x 0.6 3 x 2 x 1	102 225	980 35

The Vetter standard colours



Would you like a different colour?
No problem! Just give us a call:
+49 (0)2252 / 3008-60



In operation for...

- › During epidemics
- › To decontaminate patients in front of hospitals
- › During ABC protective measures after factory and reactor accidents
- › During terror attacks or in case of war



Good reasons:

- › Saves time and personnel
- › Only one filling connection for the entire system
- › Fill with compressed air bottle or with a blower
- › Removable components makes tent easy to clean
- › Can be coupled with the PZ 17 Universal Tent



Guaranteed quality:

- › Individually tested (Seal of Approval)
- › Integrated safety valve prevents overfilling
- › Support frame made of sturdy material



Decon Tent PZ 40 3 L

Mass decontamination, safe and fast.

In an emergency, every minute counts! Decontaminate a large number of people in the shortest possible time. Thanks to two longitudinal partitions, the tent is subdivided into 3 decontamination lines. Use the middle line (1.85 m wide) to decontaminate casualties in the horizontal position; the outer lines (1.62 m wide) provide sufficient space for showering off men and women separately.

The shower units divide the tent into undressing, showering and dressing areas. Since each shower unit has a separate water supply, the water volume and temperature can be individually controlled. Practical orientation during use is provided by the colour coding of the feed-through holes in the tent tarpaulin (blue: water, red: heating or electricity, green: compressed air). The continuous collecting basin in the shower area prevents fluid from transgressing into the rest of the tent. If required, easily connect the PZ 30 and PZ 40 universal tent as an additional supply or accommodation tent with the PZ 40 3 L to expand the functional radius.



Decon Tent PZ 40 3 L comes standard with these components:

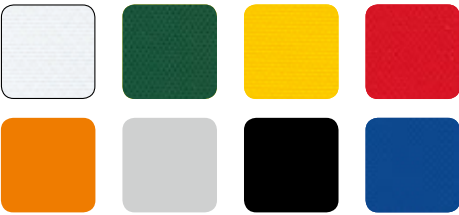
- › Inflatable tent frame including the guy cable
- › Removable tarpaulin with removable entrance tarpaulins
- › 6 doors (3 in each entrance tarpaulin)
- › 6 windows (3 in each entrance tarpaulin)
- › Removable tent floor
- › 2 removable longitudinal partitions to subdivide the tent into 3 lines
- › 3 shower units with removable shower curtains and shower hoses
- › Shower basin made of polyester fabric, PVC coated on both side (other qualities on request)
- › 12 shower handsets (4 handsets per shower unit)

Each tent comes with an accessories case including a hammer, earth pins and repair material. The whole equipment is supplied in a practical pack unit. A shearing roller conveyor and the related spine boards are optionally available.

Technical Data

Decon Tent PZ 40 3 L	Erection time sec.	Size, exterior (L x W x H) m/ft	Size, interior (L x W x H) m/ft	Air requirement Liter/cu.ft.	Stowing dimensions (L x W x H) m/ft	Weight ca. kg/lbs	Collecting basin, Liter/cu.ft.
40 m², 3 lines 1520035500	300	8 x 5.5 x 3.1 26 x 18 x 10	8 x 5.1 x 2.9 26 x 16 x 9	6863 242	1.1 x 0.85 x 0.85 3 x 2 x 2	204 450	2610 92

The Vetter standard colours



Would you like a different colour?
No problem! Just give us a call:
+49 (0)2252 / 3008-60



In operation for...

- › During epidemics
- › To decontaminate patients in front of hospitals
- › During ABC protective measures after factory and reactor accidents
- › During terror attacks or in case of war



Good reasons:

- › Saves time and personnel
- › Only one filling connection for the entire system
- › Fill with compressed air bottle or with a blower
- › Removable components makes tent easy to clean
- › Can be coupled with the PZ 17 or PZ 40 Universal Tent



Guaranteed quality:

- › Individually tested (Seal of Approval)
- › Integrated safety valve prevents overfilling
- › Support frame made of sturdy material



Decon showers

The pneumatic showers are used as emergency decontamination positions or applied in combination with other tents. Owing to their size, the showers are specially designed to quickly and easily fit into the tents. Consequently, the functional radius is extended by a clothe changing area.

A selection of two models

You can choose between the compact shower and the decon shower: the decon shower has an additional frontal outside basin enabling secondary cleaning of boots as well as serving the purpose of preventing any splashing of contaminated shower water on the floor.

Both types of shower can be obtained (as an option) with gloves and/or with drainage in the insertion basin. The gloves integrated into the curtain make showering down of persons easier for staff. The drain in the insertion basin enables controlled drainage of contaminated liquids.

Technical data		Compact shower	Decon shower
Art.no.		1513000102	1513003900
Art.no.	with gloves	1513003500	1513004000
Art.no.	with drain	1513003600	1513003800
Art.no.	with gloves and drain	1513003700	1513001801
Erection time, ca.	sec.	30	40
Ext. basin size (L x W x H)	cm ft	156 x 156 x 20 5 x 5 x 0.65	276 x 156 x 20 9 x 5 x 0.65
Int. basin size (L x W x H)	cm ft	120 x 120 x 20 4 x 4 x 0.65	240 x 120 x 20 8 x 4 x 0.65
Total height	cm ft	220 7	220 7
Air requirement	l cu.ft.	682 24	738 26
Capacity	l cu.ft.	300 11	770 27
Ø Water flow rate	l/min. cu.ft./min.	25 0.88	25 0.88
Pack size	cm inch	110 x 72 x 30 43 x 28 x 12	110 x 72 x 30 43 x 28 x 12
Weight, ca.	kg lbs	24-29 53-64	27-32 60-71

All rights reserved for technical changes

Items

- › Shower curtain and the insertion basin are exchangeable
- › Raised support frame for feet positioning (ergonomic position)
- › Abrasion protection on the underside
- › Shower hose is exchangeable
- › 8 moveable shower heads positioned at different heights
- › Facility for additional fitting of a decontamination hand shower

Decon shower



Integrated gloves (optional)



Compact shower



In operation for...

- › Epidemics
- › Decontamination of patients in front of the hospital
- › ABC-protection measures as a result of accident in plants and reactors, terrorist attacks or in war situations
- › Shower for staff or patients in the mobile hospital



Good reasons:

- › Operationally flexible inside and outside the tent
- › Quickly erected and operational
- › Optional outside basin enables post-cleaning
- › If required, integrated gloves for showering down of persons by staff
- › Can be supplied with drain in the shower basin in order to enable controlled drainage of contaminated liquids
- › Extensive range of accessories



Guaranteed quality:

- › Final inspection
- › Testing at 1.3 times the operating pressure
- › A safety valve (0.3 bar) integrated into the support frame avoids over-inflation
- › Complete construction which is extremely sturdy
- › A support frame made of a special tear-proof material
- › Collection basin made of a polyester fibre coated with PVC on both sides (other qualities possible on request)

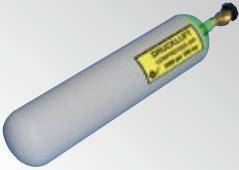

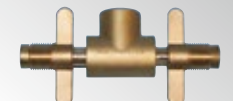





Accessories

Everything belonging to it.


Inflation and deflation

Inflation with a compressed air bottle

Compressed air bottle 6 l / 300 bar , Steel, 5/8" IT = 1800 l for quick and safe inflation	Art. no.: 1600010800																						
Compressed air bottle 10 l / 200 bar , Steel, 5/8" IT = 2000 l for quick and safe inflation	Art. no.: 1600010500																						
Compressed air bottle 9 l / 300 bar , Composite, 5/8" IT = 2700 l for quick and safe inflation	Art. no.: 1600019900																						
Dual connector 200 bar for simultaneous connection of 2 compressed air bottles (200 bar), thread 5/8"	Art. no.: 1600008400																						
Dual connector 300 bar for simultaneous connection of 2 compressed air bottles (300 bar), thread 5/8"	Art. no.: 1600009100																						
Pressure regulator 200 / 300 bar with max. output pressure of 12 bar	Art. no.: 1600026100 Art. no.: 1600026200 (USA)																						
Blower 0.23-0.47 bar/3.3 - 6.8 psi , electrical (120 V or 230 V) <table><tr><td>Flow rate, max.</td><td>l / min.</td><td>1800</td></tr><tr><td>Flow rate with booster, max.</td><td>l / min.</td><td>2500</td></tr><tr><td>Power, max.</td><td>W</td><td>1000</td></tr><tr><td>Power with booster, max.</td><td>W</td><td>2000</td></tr><tr><td>Mains voltage</td><td>V/Hz</td><td>230/50</td></tr><tr><td>Dimensions (L x W x H)</td><td>cm inch</td><td>32 x 17 x 26 12.5 x 6.6 x 10.1</td></tr><tr><td>Weight</td><td>kg lbs</td><td>4.1 9</td></tr></table>	Flow rate, max.	l / min.	1800	Flow rate with booster, max.	l / min.	2500	Power, max.	W	1000	Power with booster, max.	W	2000	Mains voltage	V/Hz	230/50	Dimensions (L x W x H)	cm inch	32 x 17 x 26 12.5 x 6.6 x 10.1	Weight	kg lbs	4.1 9	Art. no.: 1523017700 (230 V) Art. no.: 1523017900 (120 V)	
Flow rate, max.	l / min.	1800																					
Flow rate with booster, max.	l / min.	2500																					
Power, max.	W	1000																					
Power with booster, max.	W	2000																					
Mains voltage	V/Hz	230/50																					
Dimensions (L x W x H)	cm inch	32 x 17 x 26 12.5 x 6.6 x 10.1																					
Weight	kg lbs	4.1 9																					
Inflation hose , 1.5 m/0.6 inch for blower 0.23 - 0.47 bar	Art. no.: 1523021100																						




* additional tent blowers on request

Deflation


Vacuum adapter , for rapid and complete deflation of the support frame; snap coupling is connected to the air supply source, the pressure should be between 4-8 bar	Art. no.: 1700018300	
Adapter , from claw coupling to brass inflation connection	Art. no.: 1600012000	

Equipment

Windows

Window , with mesh net and cover	Art. no.: 1520020600	
Window , with mesh net, cover and additional wind protection foil (polyglass)	Art. no.: 1520025700	
Roof window , with cover for darkening inside and protection screen (polyglass) outside	Art. no.: 1520041300	



Ventilation

Ventilation flap , for better ventilation, positioned in the roof	Art. no.: 1520025800	
--	----------------------	---

Ducts

Duct openings , (additionally) for cables or heating, with velcro and fleece	Art. no.: 1520020500	
---	----------------------	---


Marking/Logo

Tent print marking , one colour, on the outside (multi-coloured on request)	Art. no.: 1520022400	
Cover with print , one colour, 1300 x 600 mm (multi-coloured on request)	Art. no.: 1520025600	


Insulation cover

Insulation cover , for MT-Series, for protection against extreme temperatures		
--	--	--

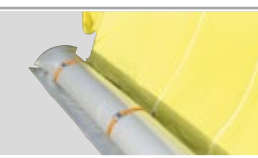
Transverse separation walls

Separation wall, transverse , for MT-Series (all tent sizes) with door	Art. no.: 1523014100	
---	----------------------	---

Longitudinal separation walls



MT 20	Art. no.: 1523014300	
MT 30	Art. no.: 1523014400	
MT 40	Art. no.: 1523014200	
MT 60	Art. no.: 1523014500	

Ballast tanks

Ballast tank , for improved stability with strong winds, 2 ballast tanks are needed per tent; different sizes can be obtained on request		
---	--	---

Lighting

Daylight lamps IP 54 (spray water protected) including nylon belt

Plug and socket IP 54 daylight lamp 2 x 36 W spray water protected	Art. no.: 1520038600	
Plug and socket IP 54 daylight lamp 2 x 55 W spray water protected	Art. no.: 1520038900	
Plug and socket IP 68 daylight lamp 2 x 36 W protected against water penetration when permanently immersed	Art. no.: 1520038700	
Plug and socket IP 68 daylight lamp 2 x 55 W protected against water penetration when permanently immersed	Art. no.: 1520038800	

Water supply

Water supply

Portable hot water heater „Decon Mobile“ with integrated admixing device		
Operating pressure max.	bar	15
Water flow rate max.	l/min	40
Hot-water outlet 2 each	°C	30 - 60
Hot-water outlet with chemicals 2 each	°C	40
Heating capacity	kW	90
Internal burner thermostat, controllable up to max.	°C	40
Flame detection	Thermal	
Diesel consumption	l/h	ca. 7.8 (continuous duty)
Volume of fuel tank	l	20
Weight (without fuel)	kg	65
Electric connection	V	230/50
Electrical controller	V	24
Length	mm	890
Width	mm	570
Height	mm	800

*Input and output Storz D

Dosing device , including suction hose, connection: Storz D		
Operating power	l/h cbm/h	10 2.5
Max. operating pressure	bar	6
Operating temperature max.	°C	40
Dosage amount	l/h	0.1 - 152
Dosing	%	1 -5
Dimensions (L x W x H)	cm inch	40 x 60 x 70 15.6 x 23.4 x 27.3
Weight	kg lbs	8.9 19.6

Art.-Nr.: 1520045400



Art. no.: 1520016000



Water pump, including suction hose and suction basket filter, pressure and suction connection: Storz D

Flow rate	l/min	88
Mains supply voltage	V/Hz	230/50
Rev. rate	U/min.	2900
Protection class	F/IP	44*
Fuse rating	A/min.	16
Suction height max.	m	8
Power consumption	kW	1.3
Nominal power	kW	5.8
Dimensions (L x W x H)	cm inch	42 x 29 x 40 16.5 x 11.5 x 15.5
Weight	kg lbs	13 28.7

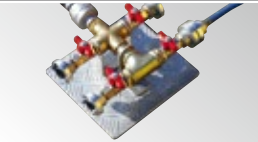
*Protection against tool contact, wires, or similar, > 1 mm; protection against foreign bodies > 1 mm; protection against water spray from all directions

Art. no.: 1520015800



Water distributor, 4 stage distributor, Storz D, e.g. for simultaneous operation of max. 4 showers

Art. no.: 1520015600



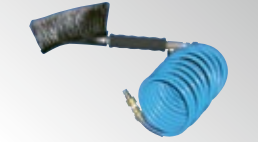
Water supply hose, made of rubber, coiled, stable shaped, suitable for warm water; length 2 m

Art. no.: 1520015500



Hand shower, for shower tent / showers

Art. no.: 1510001700



Open Water Tank (OWT), (capacity: 1000-20000 l), to collect or temporarily store leaking liquids, waste water




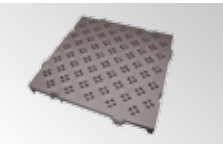






Closed Water Tank (CWT), (capacity: 500-100000 l), to collect or temporarily store leaking liquids, waste water





Closed Water Tank (CWT-L), (capacity: 500-100000 l), water tank made of food safe material for preparing 7 drinking water containers





Decon spray shower, quick-stop function	Art. no.: 1510014700	
Waste water pump with flat suction, Storz D coupling	Art. no.: 1520041600	
Coloured tarpaulins for decontamination lines, PVC, 2.5 x 4 m (97.5 x 156 inch)	Art. no.: 1513002701 Art. no.: 1513000901 Art. no.: 1513000801	
Floor grate for shower basins, 50 x 50 x 5 cm (19.5 x 19.5 x 1.9 inch), grey	Art. no.: 1520039000	
Waste water hose, 15 m, Storz D	Art. no.: 1523029500	
Adapter D-Storz with quick-action coupling, for connecting the decon spray shower to the water supply	Art. no.: 1700009500	
For decontamination of injured persons in horizontal position	Art. no.: 1520039700 (Expandable roller conveyor) Art. no.: 1520039400 (Spineboard)	
Suction hose, 6 m, oil-resistant, incl. elbow	Art. no.: 2230023000	
Suction jet, for shower basin to obtain better drainage / for connection to a Vetter oil aspirator	Art. no.: 1700014701	

Tent heater ATK 25 (automatic oil heater)

Heating power	kW	22.5	Art. no.: 1520028600	
Nominal heating load, max.	kW	25		
Air flow power	m³ / h	1080		
Mains voltage supply	V/Hz	230/50		
Fuel		a light heating oil/ diesel		
Fuel consumption, max.	kg / h	2.4		
Tank capacity	l	40		
Exhaust supports Ø	mm	150		
Dimensions (L x W x H)	cm inch	126.5 x 47 x 68.5 49.4 x 18.3 x 26.7		
Weight, ca.	kg lbs	68 150		
Damp room thermostat IP 54, including 10 m cable and plug			Art. no.: 1520028700	
Warm air hose, Ø 305 mm, L: 7000 mm			Art. no.: 1520028800	
Exhaust tube, 1 m			Art. no.: 1520028900	
Rain cover, Ø 150 mm, for rain protection			Art. no.: 1520029000	

Tent heating K 30 T (automatic oil heater)

Heating power	kW	29	Art. no.: 1520017000	
Nominal heating load, max.	kW	32		
Air flow rate	m³ / h	2050		
Mains voltage supply	V/Hz	230/50		
Fuel		a light heating oil/ diesel		
Fuel consumption, max.	kg / h	2.5		
Tank capacity	l	35		
Blow out supports Ø	mm	2 x 205		
Dimensions (L x W x H)	cm inch	145 x 68 x 82 56.5 x 26.5 x 32		
Weight, ca.	kg lbs	85 187.5		
Damp room thermostat IP 54, including 10 m cable and plug			Art. no.: 1520017300	
Warm air hose, Ø 305 mm, L: 7000 mm			Art. no.: 1520017100	
Exhaust tube, 1 m			Art. no.: 1520017200	
Rain cover, Ø 150 mm, for rain protection			Art. no.: 1520017400	

Polarn 8000

Air conditioning unit supplied on request.



A part of the IDEX Corporation.

Vetter GmbH is part of the international IDEX Corporation which invests in successful medium-sized companies in highly specialised markets. All companies which belong to the group have two things in common: strong technical orientation and innovative strength.

In addition to **Vetter**, the IDEX Rescue division includes some of the strongest brands from the field of fire and rescue services such as HURST – JAWS OF LIFE, the American rescue cutter manufacturer, and LUKAS Hydraulik, a long-established company from Germany.

As our customer, you will benefit from our international practical knowledge and the intensive transfer of skills and know-how within the corporate group which contributes to the development of sophisticated and high-performing products.



www.idexcorp.com

The all-round manufacturer for specialized emergency pneumatics

Owing to the intensive work for fire services throughout the world, **Vetter** was able to create an extensive product range which has become indispensable in many fields of rescue. It is this specialized technical knowledge that puts us in a position of being able to offer our customers the optimally tailored pneumatic solution for different application scenarios.

- › **Lifting Bags**
- › **Safety Cushions**
- › **Hazardous Material Program**
- › **Oil and Water Aspirators**
- › **Aircraft Lifting Bags**
- › **Airshore Struts**

All products as well as detailed information and the catalogue for downloading can be found on our internet website under

www.vetter.de

Place your trust in emergency pneumatics!

We are the company who can help you, find a solution to your problem!

Vetter GmbH

A Unit of IDEX Corporation

Blatzheimer Str. 10 - 12
D-53909 Zülpich
Germany

Sales Germany

Tel.: +49 (0) 22 52 / 30 08-50
Fax: +49 (0) 22 52 / 30 08-70
Mail: vetter.info@idexcorp.com

International sales

Tel.: +49 (0) 22 52 / 30 08-60
Fax: +49 (0) 22 52 / 30 08-71
Mail: vetter.info@idexcorp.com

www.vetter.de

Art. no. 9988011801 | © Copyright | 05.2013 | Vetter GmbH | Changes and errors excepted.