

IGUANE IS DESIGNED FOR HIGH-POWER FIRE-FIGHTING VEHICLES USING CLASS A & B FOAM

IGUANE CLASS A FOAM

- **Pump:** 30 l/min
- **Pressure:** 15 bar
- **Dosage:** 0.1 to 1%
- **Water flow rate:** 250 - 12,000 l/min
(depending on the size of the manifold)
- **Power supply:** Electricity 24VDC (other voltages possible)

CLASS B FOAM

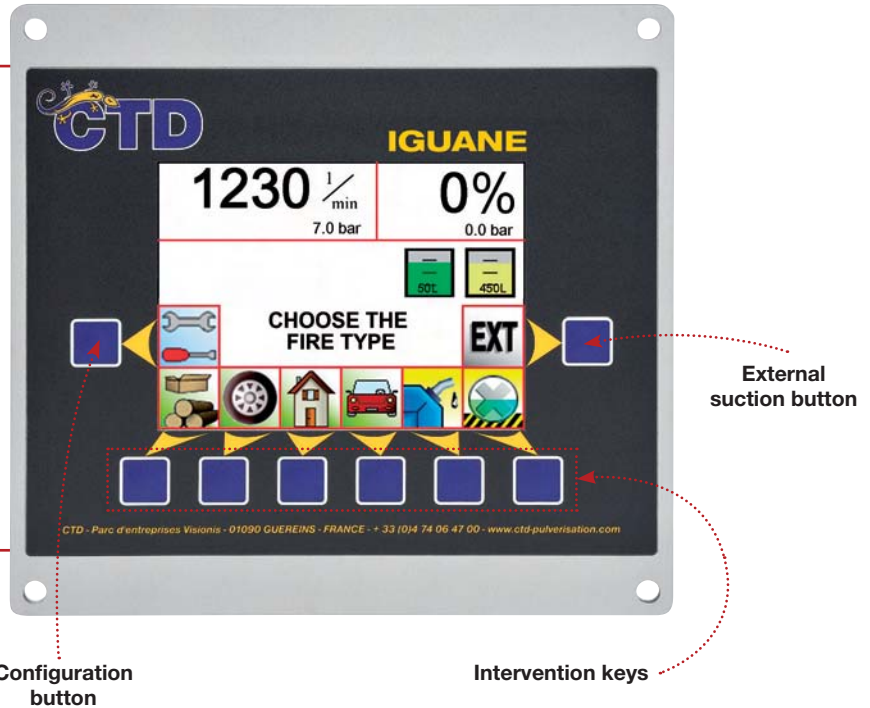
- **Pump:** 120 to 600 l/min (depending on the model)
- **Pressure:** 16 bar
- **Dosage:** 1 to 6%
- **Water flow rate:** 250 - 12,000 l/min
(depending on the size of the manifold)
- **Energy:** Diesel or Hydraulic

A RANGE OF 5 MODELS

(details p.4)

OPERATING PRINCIPLE

IGUANE starts up as soon as the battery master switch is turned on. Selecting a Class A concentration activates the electric pump dosing. IGUANE automatically primes then inject foam concentrate according to the real time water flow. Selecting a Class B concentration starts the hydraulic motor-pump and automatically primes then inject the foam concentrate under pressure. IGUANE injects the foam concentrate under pressure as soon as a nozzle is opened, automatically a regulation valve adjust the foam injection according also to the real time water flow. IGUANE allows continuous dosing whatever product and water flow rate ranges are used. After intervention, IGUANE automatically start a flushing cycle.



SCREEN BENEFITS

+ UNIT

- Colour screen
- 6" display size
- Waterproof (IP68)
- Impact resistant
- Compact size
- Remote start-up
- Operating temperature between -20°C and +50°C

+ FULL DISPLAY

- Water flow rate
- Actual concentration
- Predefined concentration icons for the two products
- Water pressure and injection pressure for Class A & B foam
- Product tank levels with capacity
- Autonomy

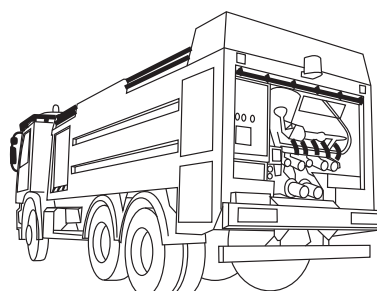
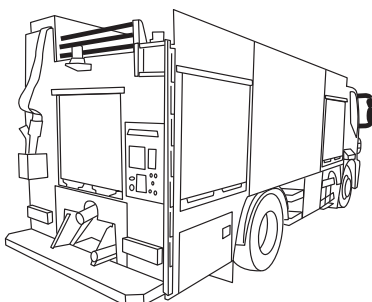
+ MONITORING

- Intervention report
- Fault log

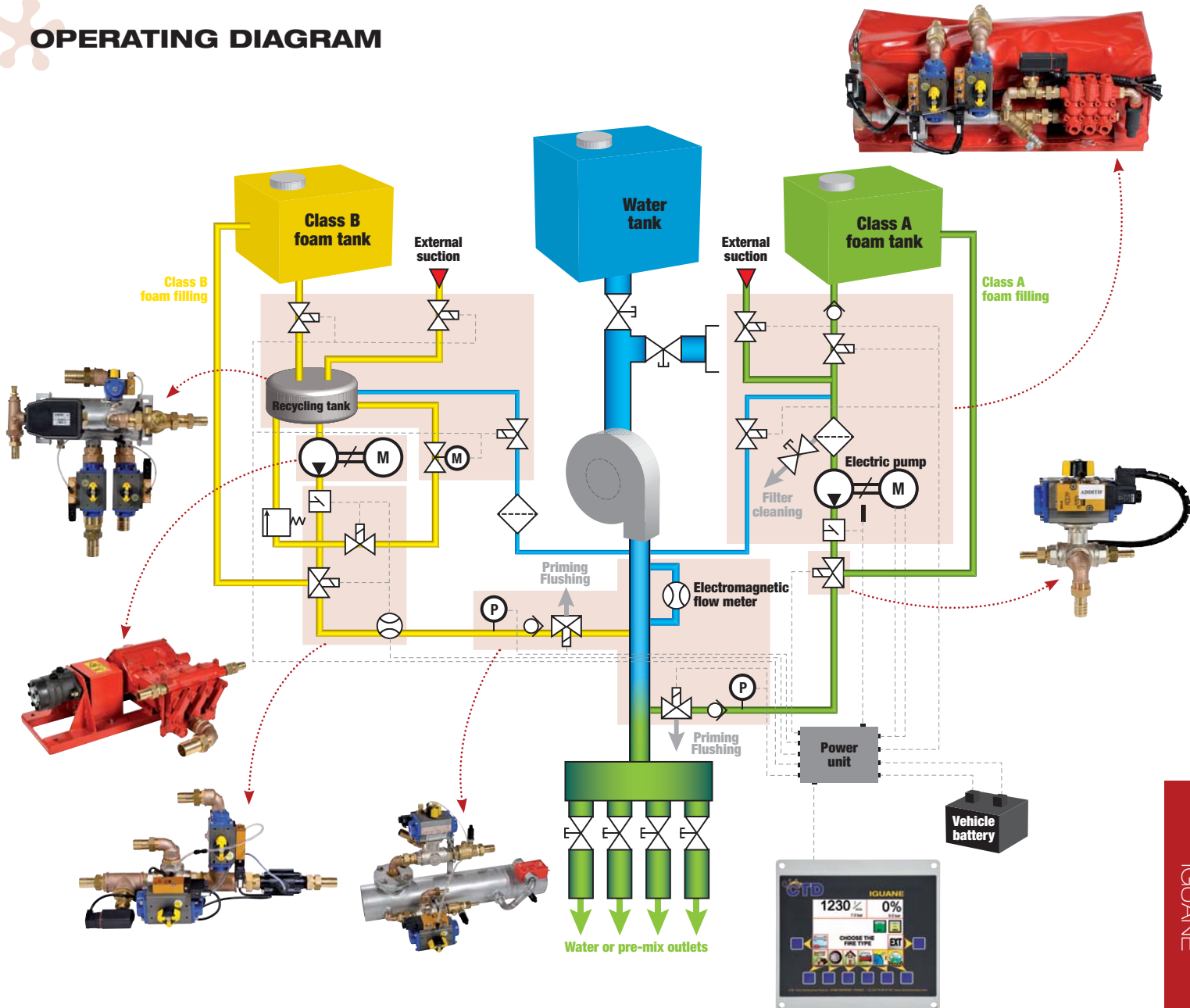
+ ADAPTABLE

- Customisable icons
- Secondary screen option is possible
- Download intervention report by bluetooth
- Several languages available

VEHICLES FITTED EXAMPLES



OPERATING DIAGRAM



SYSTEM BENEFITS

HIGH-PERFORMANCE

Injecting the product under pressure means IGUANE can be used whatever the water flow rate and pressure. This makes it possible to use considerable lengths of hoses lines. Pre-mixing is performed in the truck without any pressure loss this allows fireman deployment to be far from the danger zones.

ECONOMICAL

A training mode allows the equipment to be tested without foam use

FUNCTIONAL

- Compatible with all Class A and B products
- Can be fitted on all types of vehicles
- Available as a pre-mounted kit or mounted on its own frame
- Electric motor for the Class A foam, and thermal engine or hydraulic motor for the Class B foam
- Easy maintenance

COMPREHENSIVE

- Automatic priming and flushing for both products
- External suction
- Product tank filling from the ground
- Class B foam transfer to an external container

MULTI-PURPOSE

Class A foam use on urban fires, improves the speed and effectiveness of extinguishing, thereby reducing water consumption. Class B foam concentrate use on industrial fires, means extinguishing will be faster and easier to cool down more effectively burning areas. The possibility of injecting the product either from the tank onboard the vehicle or directly from an external stock increases the autonomy of the dosing system and allows foam to be continuously produced at a perfect controlled concentration. The tank filling function means operators does not need to handle the product.

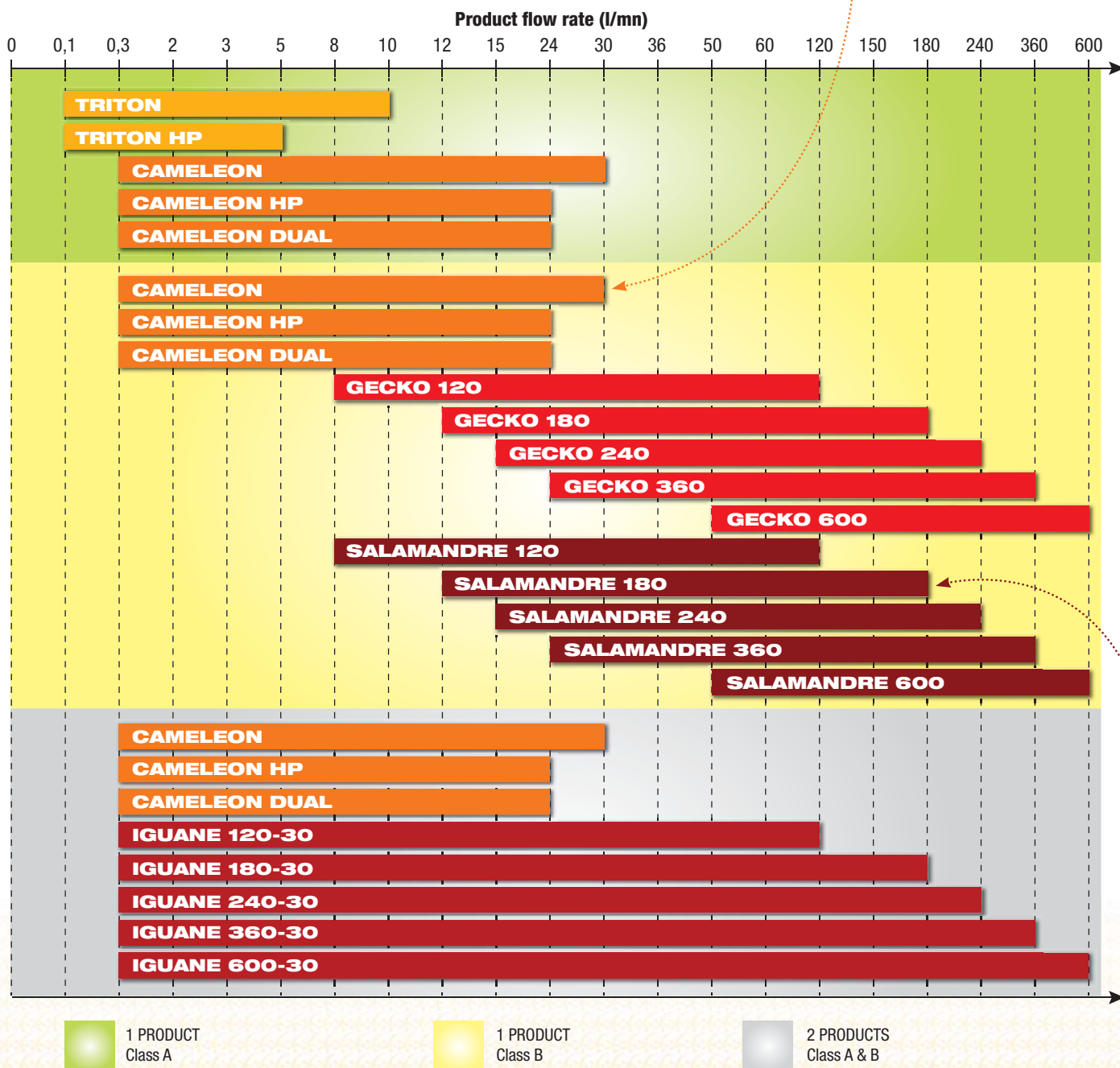
HOW TO CHOOSE YOUR FOAM DOSING SYSTEM

1. Choose the type(s) of product(s) you are going to use (CLASS A or B, or CLASS A & B foam)

2. Calculate the minimum and maximum product flow rate using the following formula:

$$\text{Water flow rate (l/min)} \times \text{Concentration (\%)} = \text{Product flow rate (l/min)}$$

EXAMPLE NO.1
 If you want to use a 400 l/min foam nozzle with 3 % CLASS B foam on your vehicle:
 $400 \text{ l/min} \times 3\% = 12 \text{ l/min of product}$
The CAMELEON system corresponds to your needs
 See page 8



CTD is here to advise you and help you choose the equipment best suited to your needs.

EXAMPLE NO.2
 If you want to use a 3000 l/min monitor with 6 % CLASS B foam on your skid:
 $3000 \text{ l/min} \times 6\% = 180 \text{ l/min of product}$
The SALAMANDRE 180 system corresponds to your needs - See page 16