

The next generation rescue tools.

Discover the new liberty in rescue.

eDRAULIC



S700E | S311E | SP300E | SC350E | SC250E | R411E

DISCOVER THE LIBERTY WITH eDRAULIC!

LUKAS is the first manufacturer worldwide to combine the mobility of handy battery powered tools with the high performance of hose connected devices. Rely on the original! For the fastest and safest rescue operations. eDRAULIC tools are already in service with numerous fire brigades worldwide – and all are very enthusiastic. The eDRAULIC connection is designed for the special needs of rescuers, well protected and perfectly integrated in the housing.

> LIBERTY OF PERFORMING OPTIMAL RESCUES.

With a top-quality complete set for modern vehicle extrication and high performance reserves for future-generation vehicles.

- + All essential rescue tools are now available in a eDRAULIC version (recognisable via the additional "E")
- + Cutter S 700 E with improved blade geometry reaching 77% more cutting force
- + Full power thanks to high-performance eDRAULIC
- + On-off-principle: press the button and start to work

> LIBERTY OF WORKING WITHOUT POWER UNITS AND HOSES

Either completely free in battery mode or with permanent power supply from the mains.

- + Faster and safer rescues
- + eDRAULIC frees up extra space on the truck
- + Weight reduction by almost 50 % in comparison to a conventional complete set



> FREEDOM TO SIMPLY BE INDEPENDENT

In battery mode, experience unexpected freedom of movement that keeps you flexible and effective for off road rescues or large scale accidents. The powerful lithium-ion battery gives you all the power you need to overcome even the very latest vehicle construction technology. The entire design is perfectly optimised for rescue:

- + One battery type for all tools
- + Fast change from cable to battery operation, both fit in same compartment
- + Illuminated battery compartment for night work
- + Housing protects the battery
- + Protection against moisture: protection class IP44

> In use



There was a time when rescue equipment was driven by hand.

There was a time when power units and hoses were necessary.

**Those times are over now.
Now eDRAULIC offers you the new liberty!**



S 700 E

ULTIMATE LIBERTY.



360° view, videos and more pictures?
Just scan the QR code



S 700 E

The S 700 E frees your mind! Whatever comes, you can cut it. No matter where. Because it combines the best cutting performance of all time with liberating eDRAULIC- technology.

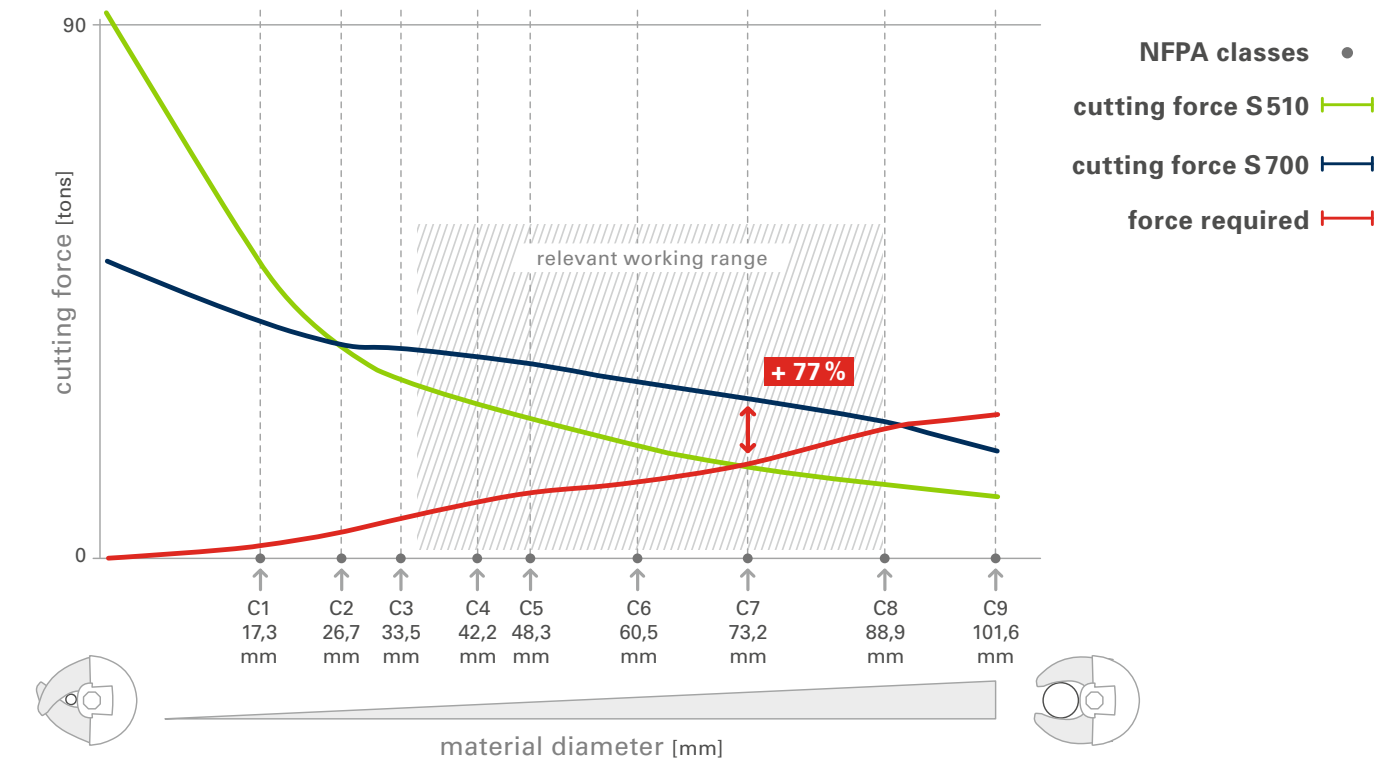
Advantages

- + Optimised for current and upcoming vehicles with stronger and wider car posts: more power where you need it.
- + Superior C-shaped blades for the perfect pull effect.
- + Intelligent cutter geometry causes the cutter to automatically adopt the optimal position.
- + Up to 77% more cutting force in the relevant work area than our previous top tool.
- + Large performance reserves for future vehicle generations.

In use



DEVELOPED FOR REALITY.



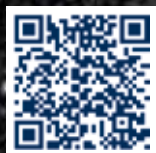
Technical Data	S 700 E
Blade opening	7.28 in. / 185 mm
Dimensions: l x w x h	36.4 x 11.8 x 11.4 in. / 925 x 300 x 290 mm
Weight*	54.0 lbs / 24.5 kg
NFPA-Classes	A8/ B9/ C8/ D9/ E9
EN-Cutting Class	H

*Weight without battery or power supply

WEBCODE: eklmir

S 311 E

AGILE. COMPACT. FREE.



Scan this code for
further information



S 311 E

The „little brother“ of the S 700 E is particularly convenient, and its sophisticated blade geometry means that it is fully optimised for vehicle extrication. Rescue workers value its combination of cutting performance and blade opening – not to mention its low weight.

Advantages

- + Optimal blade geometry
for more force at the right point
- + High cutting performance
- + Lightweight and well-balanced design
is less tiring
- + High reliability in use due to robust
blades with a long service life

In use



Technical Data	S 311 E
Blade opening	5.91 in. / 150 mm
Dimensions: l x w x h	33.9 x 8.9 x 11.4 in. / 860 x 225 x 290 mm
Weight*	42.8 lbs / 19.4 kg
NFPA-Classes	A7/ B8/ C6/ D7/ E7
EN-Cutting Class	F

* Weight without battery or power supply

WEBCODE: buetwv

SP 300 E

LIBERTY
AT THE TIP.

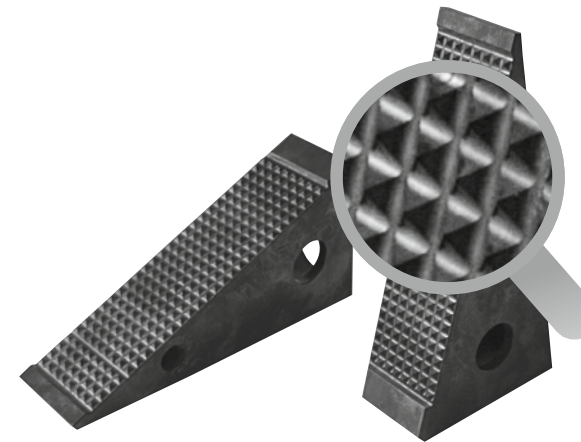


360° view, videos and more pictures?
Just scan the QR code



SP 300 E

With this new, completely redesigned top spreader nothing can stop you during a vehicle extrication. It offers the perfect combination of strength, blade opening and convenient weight.



SUPERIOR *DIAMOND TIPS*

Our specially developed diamond tips are especially designed for vehicle extrication. Their extra-flat tips and special surface finish give them an extremely good grip. They will enable you to penetrate even the narrowest gaps for faster and safer rescues.

In use



Accessories

KSV 11 chain set

Length 6.6 ft. / 2 x 2 m

Technical Data	SP 300 E
Spreading force	7,644-25,200 lbs / 34-112 kN
Spreading distance	23.8 in. / 605 mm
Pulling force up to	5,058 lbs / 22,5 kN
Pulling distance	19.5 in. / 495 mm
Dimensions: l x w x h	35.2 x 14.0 x 11.4 in. / 895 x 355 x 290 mm
Weight*	45.2 lbs / 20.5 kg

*Weight without battery or power supply

WEBCODE: pxbmtr

SC 350 E | SC 250 E



THE
LIGHTWEIGHT
COMBI TOOL -
WITH TOTAL
FREEDOM OF
MOVEMENT.



SC 250 E

NEW!



SC 350 E

ONE MAN, ONE TOOL -
NO PUMP.



360° view, videos and more pictures?
Just scan the QR code



SC 350 E

This multi-talent shows its superiority, especially in first response vehicles, helicopters and motor-cycles. Whenever a rescue scene requires fast response or it is difficult to reach, the SC 350 E shows its strengths.

Advantages

- + Faster cutting and spreading without tool change
- + Significantly reduced space requirements
- + Fast work due to short opening and closing time
- + Battery life in operation: 30 minutes
- + Enough battery capacity to free people from at least one vehicle
- + Work without interruption thanks to the simple battery change
- + Switch to mains operation possible at any time
- + Intelligent Star grip control for intuitive and safe working

Accessories



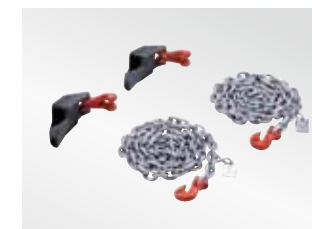
Battery bag
for three batteries



Carrying bag
for SC 350 E



Case for SC 350 E
and accessories



Chain set KSV 8

NEW: SC 250 E

Whether in civil defence, first response or urban search and rescue (USAR), when casualties are hard to reach and where every gram counts when transporting rescue equipment, the lightweight SC 250 E is an indispensable companion. For its weight class, the SC 250 E demonstrates convincing cutting performance for preliminary work at rescue sites. You can continue working without changing tools, prying open even the narrowest of openings with the flat tip to free casualties.

Advantages

- + Minimal space needs
- + Size and weight reduced for maximum freedom of movement
- + Especially suited to advance vehicles, motorcycles or helicopters
- + For operations at traffic pile-ups or in rough terrain
- + Independent of external power sources; total freedom with battery operation
- + Extended operation with mains adapter at any time

Technical Data	SC 350 E	SC 250 E
Cutting force up to	80,935 lbs / 360 kN	62,944 lbs / 280 kN
Round steel up to**	1.18 in. / 30 mm	1.02 in. / 26 mm
Spreading force up to	78,687 lbs / 350 kN	91,044 lbs / 405 kN
Spreizkraft 25 mm spitzeneinwärts	9,105 lbs / 40,5 kN	7,531 lbs / 33,5 kN
Spreading distance	14.2 in. / 360 mm	12.5 in. / 318 mm
Pulling force up to	9,218 lbs / 41 kN	7,194 lbs. / 32 kN
Pulling distance	14.6 in. / 371 mm	13 in. / 330 mm
Dimensions: l x w x h	35.75 x 8.86 x 11.42 in. / 908 x 225 x 290 mm	34.26 x 8.47 x 11.62 in. / 870 x 215 x 295 mm
Weight*	43.7 lbs / 19.8 kg	37.3 lbs / 16.9 kg
NFPA-Classes	A6/ B7/ C7/ D7/ E7	A6/ B6/ C6/ D7/ E7
EN-Cutting Class	H	F

*Weight without battery or power supply

** according to EN 13204, NFPA 1936

WEBCODE: krtqpw

WEBCODE: oetmqw

R 411 E

LIBERTY THROUGH
FLEXIBILITY.



360° view, videos and more pictures?
Just scan the QR code



R 411 E

This rescue ram is extremely compact and convincing in practice. The claws at the two ends can be rotated by 360°, enabling you to apply the ram correctly in any situation.

Advantages

- + first rescue ram without hoses
- + Extracted length (with extension)
up to 1205 mm
- + extremely solid assembly for safe operation
- + claws can be rotated by 360°

Accessories



Extension 11.8 in. / 300 mm for R 411 E



Patented ram support LRS-C

In use



Technical Data	R 411 E
Piston stroke	14.2 in. / 360 mm
Lifting force	23,156 lbs / 103 kN
Retracted length	21.5 in. / 545 mm
Extended length	35.6 in. / 905 mm
Extended length with extension	47.4 in. / 1205 mm
Dimensions: l x w x h	21.5 x 5.9 x 10.4 in. / 545 x 150 x 265 mm
Weight*	37.3 lbs / 16.9 kg

* Weight without battery or power supply

WEBCODE: zwseor